

FLOORING AND RUGS 2024



BOLON



BOLON STUDIO – LINK: ARTISAN: Quarts, Play / LINK: NOW: Silver

Bolon is a third-generation Swedish family company driven by innovation, passion and a strong urge to explore new design dimensions.

This has made Bolon into a global player, with representation at high-end stores, luxury hotels and offices of well-known brands all over the world.

Together with top international designers, architects and fashion labels, we have changed the fundamentals of the industry by adding design status to traditional flooring.

This makes us proud but not content. We are Bolon. We are innovators by heart.

FLOORING AND RUGS 2024

06 \	WHY BOLON	50 \	BOLON STUDIO™
08 \	THE SHAPES AND FORMS OF BOLON	56 \	BOLON RUGS
12 \	DISCOVER OUR COLLECTIONS	58 \	BOLON RUGS BY PATRICIA URQUIOLA
14 \	ARTISAN	60 \	BOLON RUGS BY JEAN NOUVEL DESIGN
18 \	BKB	62 \	A CLOSER LOOK AT THE PRODUCT
20 \	BOTANIC	64 \	ACOUSTIC FLOORING
24 \	ELEMENTS	66 \	SUSTAINABILITY
28 \	EMERGE	70 \	DESIGNED FOR THE LONG RUN
30 \	ETHNIC	74 \	CLEANABILITY
32 \	GRAPHIC	76 \	CERTIFICATIONS & DECLARATIONS
36 \	NOW	78 \	OUR REFERENCES
38 \	SILENCE	90 \	CONTACT US
40 \	TRULY		
42 \	BOLON BY PATRICIA URQUIOLA		
44 \	BOLON BY JEAN NOUVEL DESIGN		
46 \	BOLON BY YOU		
48 \	BOLON ORIGINAL TILES		

WHY BOLON?

Bolon is a Swedish high-end design brand specialising in innovative premium flooring and rug solutions for public spaces. All products are developed and produced in Sweden, focusing on sustainability, functionality, and design.

DESIGN

We let quality and innovation meet interior design and architecture. Our high-end design products, both flooring and rug collections are all the result of a combination of aesthetics and functionality. All products are based on the characteristic Bolon vinyl threads and the woven three-dimensional structure – creating our unique Bolon design. Making options nearly infinite.

SUSTAINABILITY

All Bolon flooring and rugs are made of BIO-sourced PVC, recycled PVC, recycled chalk and non-hazardous additives. This results in a product that contains 68% waste material, with 0% climate impact in every square meter. Our production site in Ulricehamn is climate-neutral, using only renewable energy.

DURABILITY

Bolon flooring is durable, and strong and retains its appearance without flattening, making it a perfect solution for high-intensity commercial environments. All collections have a classification of 32 (General commercial) or 33 (Heavy commercial) and come with a 10- or 15-year warranty.

CLEANABILITY

Bolon floors are impervious and resilient against spills. The compact weave prevents dirt and debris from penetrating the surface. Daily cleaning can easily be performed with a vacuum cleaner, brush, mop, and clean water.

INDOOR ENVIRONMENT

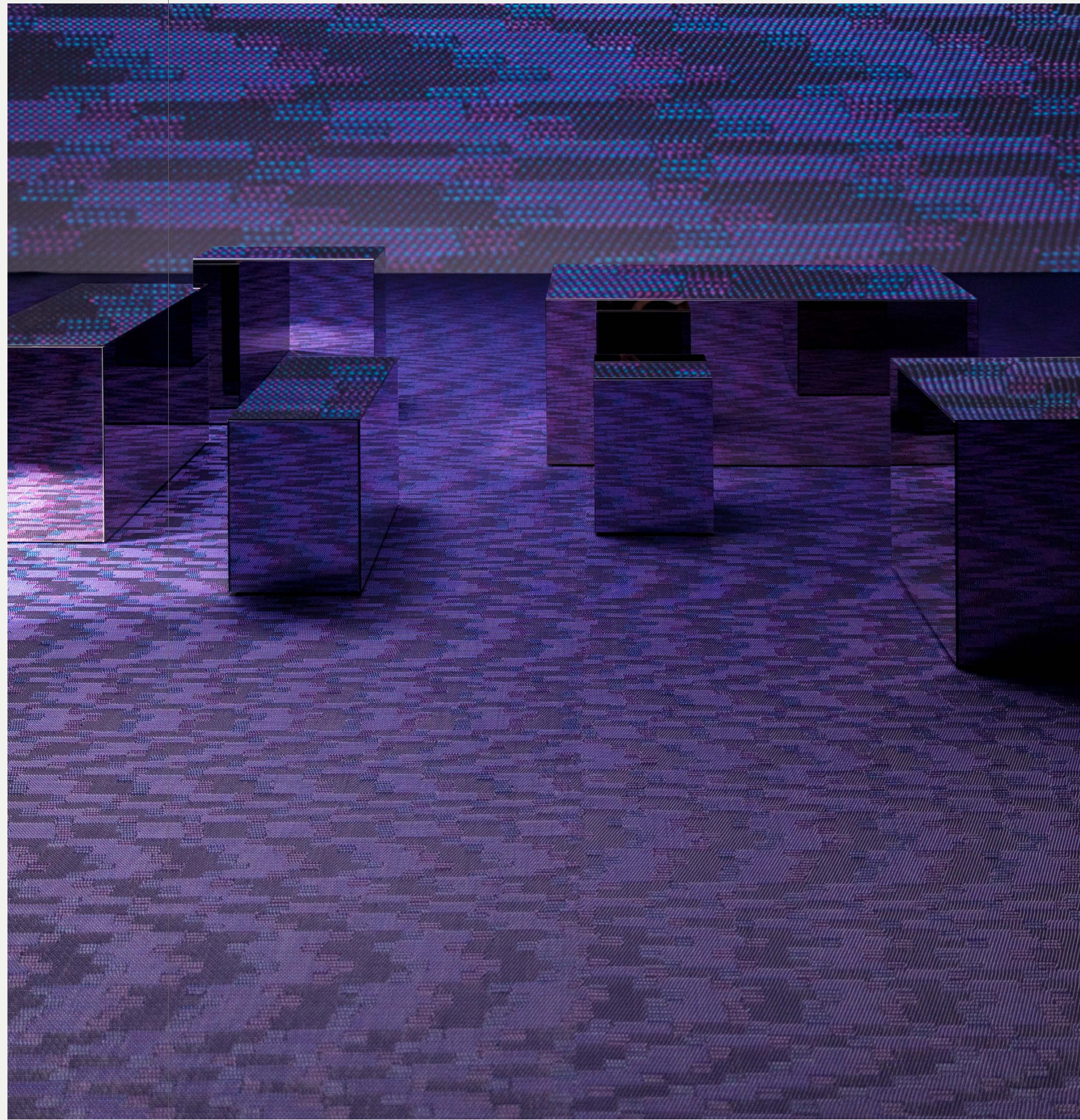
Bolon floors are inherently hypoallergenic which ensures better indoor air quality. The floors are also free from hazardous plasticizers and stabilizers.



THE SHAPES AND FORMS OF BOLON

The wide range of Bolon flooring and rugs gives you the freedom to choose bespoke products and design combinations, making your project truly unique. We offer designs that come in a variety of collections, and the design concepts Bolon Studio and Bolon By You even let you create hyper-personalized designs.

TRULY: 100%





ARTISAN: Spring

FLOORING

BOLON ORIGINAL

Bolon Original involves our standard collections, all proudly designed and produced by the Bolon design team in Ulricehamn, Sweden. Our flooring can be produced as rolls, 50 x 50 cm tiles, and Bolon Studio tiles. The product types available for Bolon Original vary depending on the collection.

BOLON STUDIO™

Curated shapes for hyper-personalized flooring. Bolon Studio is a seductively stylish concept, a woven flooring renaissance playing with spatial intelligence. Simple shapes at first glance... But when put together these curated tiles build mind-blowing immersive expressions.

BOLON BY YOU

The Bolon By You concept is a simple 3-step process that allows you to create your own personally designed flooring. It features both roll and tile patterns, in four warp, and twelve weft colours.

INTERNATIONAL COLLABORATIONS

Over the years, Bolon has enjoyed collaborations with our international friends Jean Nouvel Design, and Patricia Urquiola. Together with these world-renowned designers, Bolon has created collections that reflect both contemporary industrial design and architecture, as well as haute couture.

ACOUSTIC FLOORING

Our acoustic flooring offers increased impact sound insulation by reducing the transmission of footstep noise to rooms below. The additional thickness also offers comfort underfoot.

CUSTOMISE

There are nearly endless design possibilities for creating and customising Bolon flooring. We can meet most design requests and ideas. Contact our sales staff for successful customised solutions.

RUGS

BOLON RUGS

Combining the benefits of Bolon flooring with the versatility of a rug, Bolon Rugs serves as another option. Every rug is made-to-measure, giving you the chance to play with sizes and dimensions and to choose from all Bolon Original collections.

Some of our collaborative collections are also available as rugs. These rugs come with unique preselected trimming designs.

MISCELLANEOUS







GREEN WELD

Bolon Green Weld is an innovative cold-welding product that is non-hazardous for the flooring installer.

NO GLUE

Bolon NoGlue® is a tape that can be used as a non-permanent installation method for temporary installations where traditional adhesives are not possible to use. The product is compatible with our standard tiles and planks for wall-to-wall installations. Using Bolon NoGlue® also makes our flooring recyclable in the future when it reaches the end of its product life.

SYMBOL GUIDE

- | | |
|---|--|
|  Rolls |  Rugs |
|  Tiles |  Planks, long weft |
|  Acoustic flooring |  Planks, short weft |
|  Bolon Studio™ | |

DISCOVER OUR COLLECTIONS

Our high-end products are the result of a combination of sustainable aesthetics and durable functionality. Exciting combinations of yarn and patterns give a 3D-like expression of playful light reflections. Our unique design collections offer endless possibilities of textures, colours, shapes and patterns, making any design vision come true.

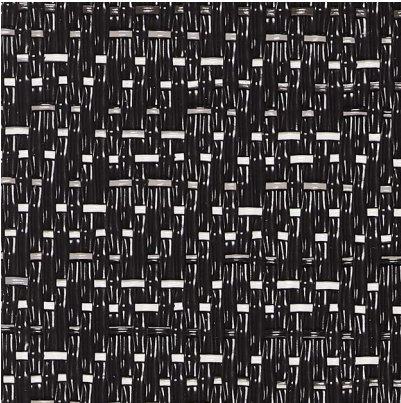
For more information about each article's properties, please see **[bolon.com](https://www.bolon.com)**

ELEMENTS: Ash



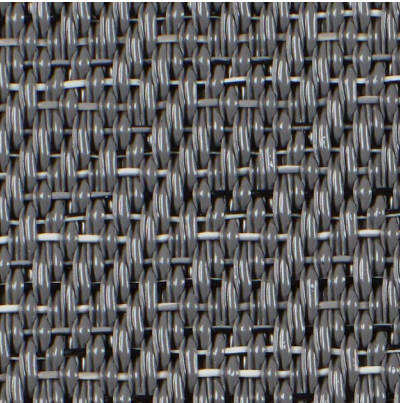
ARTISAN

NOIR



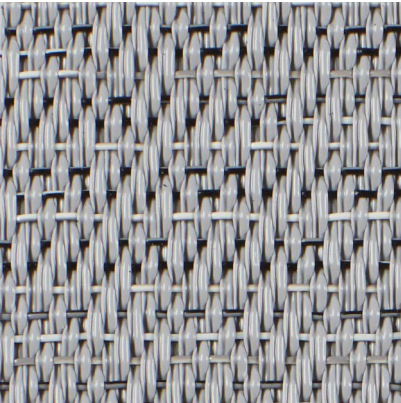
Q ■ ≡ ❖ Γ
114 152 114 180

SLATE



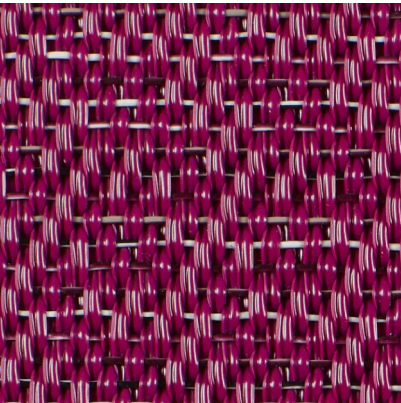
Q ■ ≡ ❖ Γ
102 739 102 789

CONCRETE



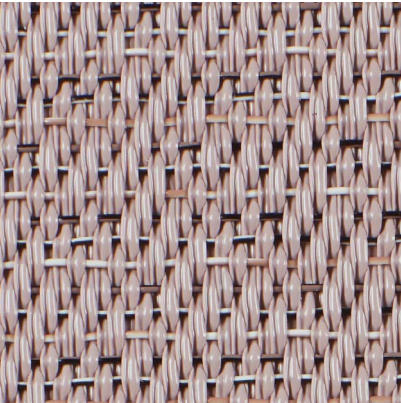
Q ■ ≡ ❖ Γ
108 022 108 031

FUCHSIA



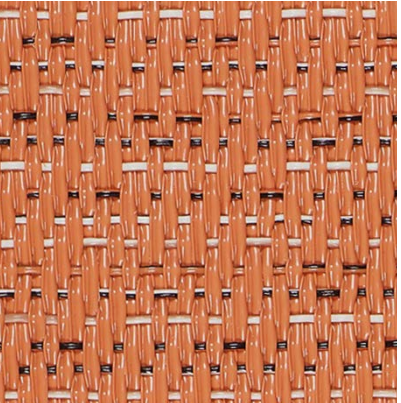
Q ■ ≡ ❖ Γ
103 637 103 639

QUARTZ



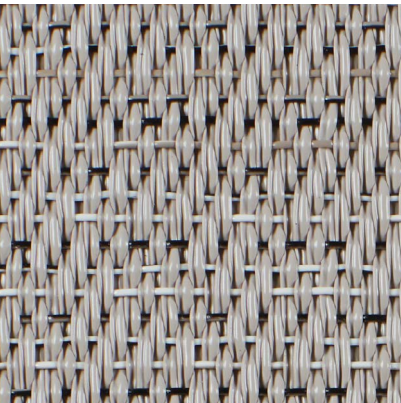
Q ■ ≡ ❖ Γ
108 123 108 125

PLAY



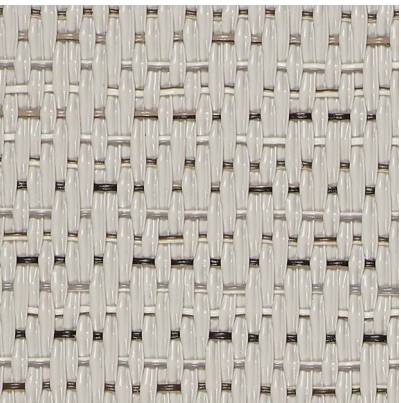
Q ■ ≡ ❖ Γ
114 146 114 174

ECRU



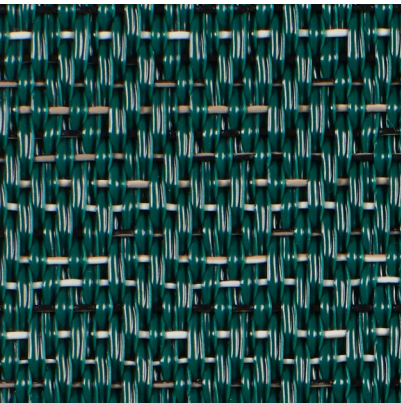
Q ■ ≡ ❖ Γ
102 738 102 788

CHALKY



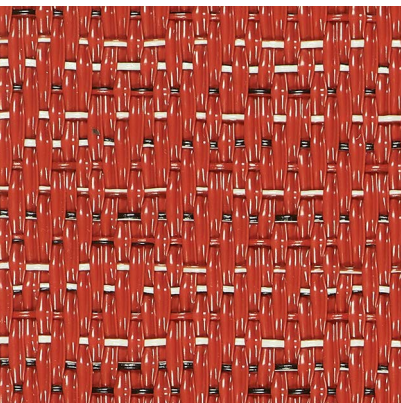
Q ■ ≡ ❖ Γ
114 144 114 172

JADE



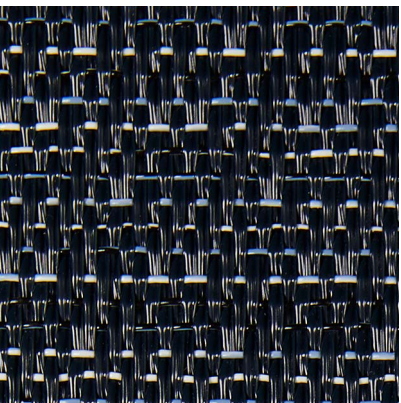
Q ■ ≡ ❖ Γ
108 024 108 033

LOVE



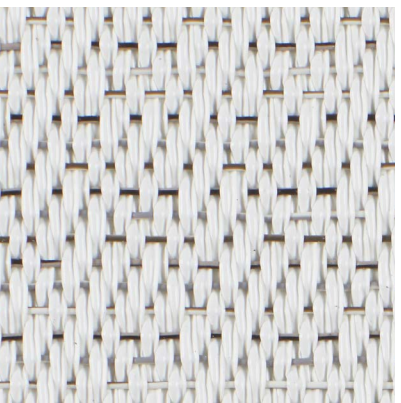
Q ■ ≡ ❖ Γ
114 145 114 173

INK



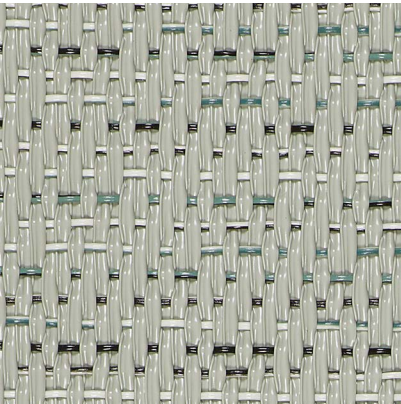
Q ■ ≡ ❖ Γ
114 153 114 181

IVORY



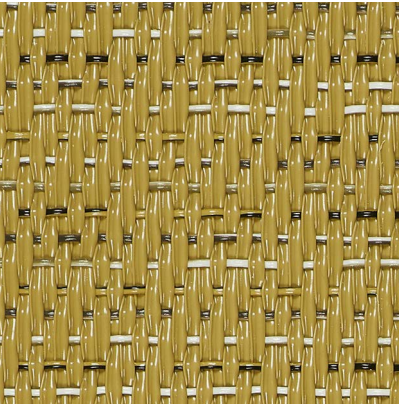
Q ❖ Γ
103 591

FRESH



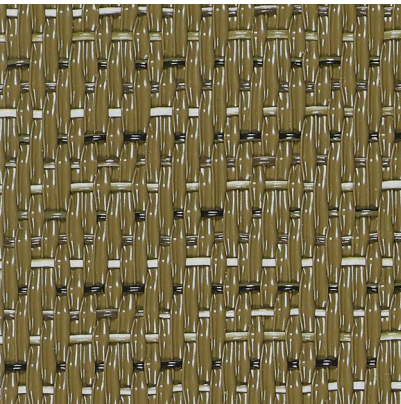
Q ■ ≡ ❖ Γ
114 149 114 177

SPRING



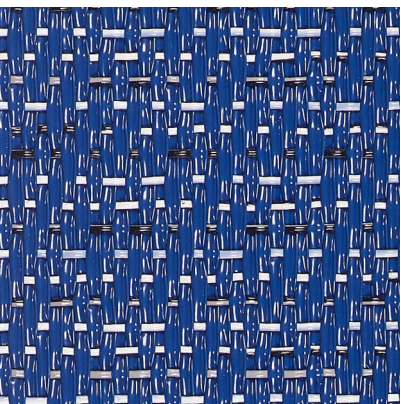
Q ■ ≡ ❖ Γ
114 151 114 179

WILD



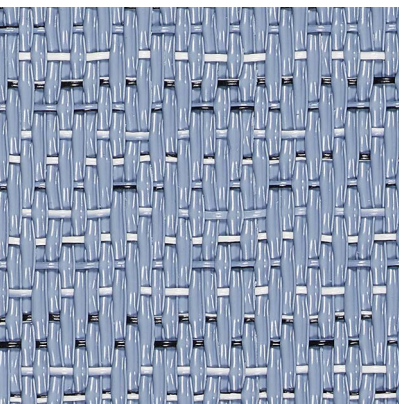
Q ■ ≡ ❖ Γ
114 150 114 178

TRUE



Q ■ ≡ ❖ Γ
114 147 114 175

WATER



Q ■ ≡ ❖ Γ
114 148 114 176

33

HEAVY
COMMERCIAL

Artisan is a lively and energetic collection – characteristics that are now enhanced. With a beautiful balance between the colours of the warp and weft as well as its structure.

Artisan has a strong identity, with colours offering more combinations both within the collection itself and with other products by Bolon.



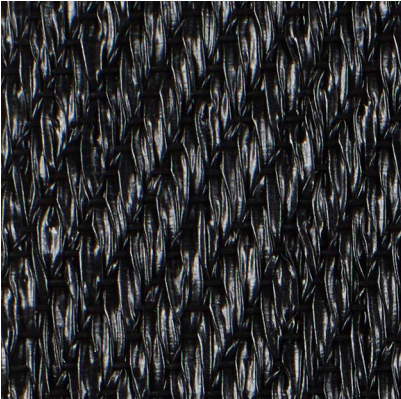
ARTISAN: Chalky, Spring, Fresh, Love, Ink



BKB: Sisal Natur Black, Sisal Plain Beige, Sisal Plain Mole, Sisal Plain Sand

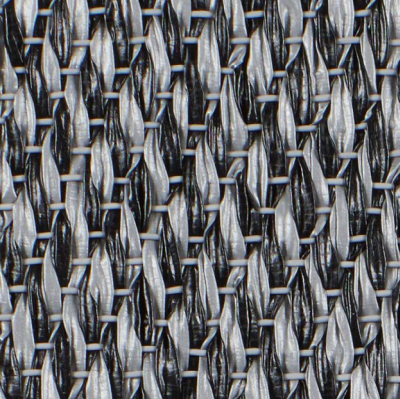
BKB

SISAL PLAIN BLACK



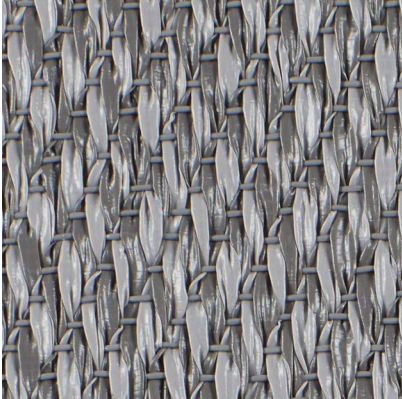
102 753 102 798

METALLIC ALPHA



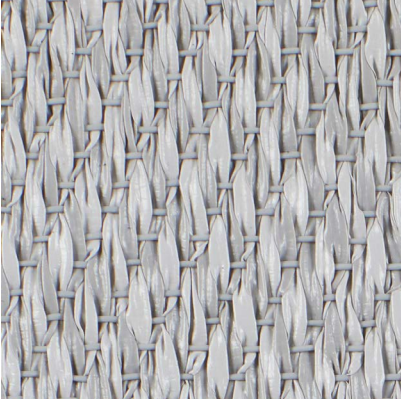
102 757 102 801

SISAL PLAIN GRANITE



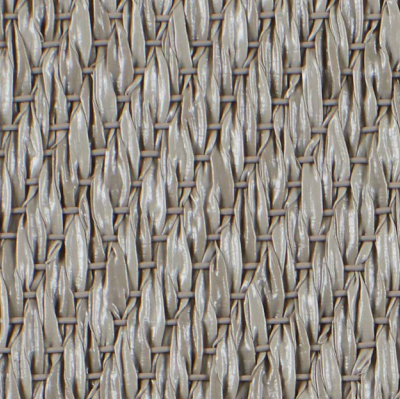
102 751 102 796

SISAL PLAIN STEEL



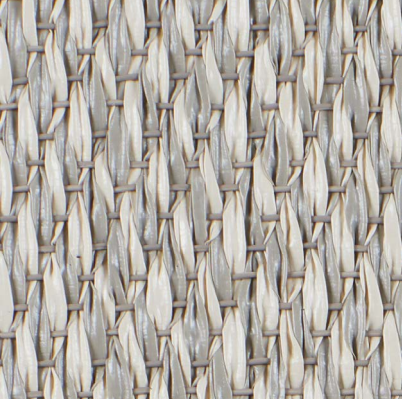
102 752 102 797

SISAL PLAIN MOLE



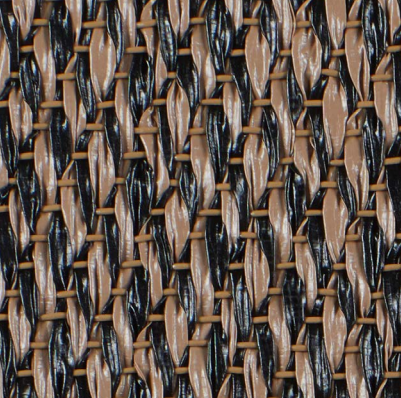
102 749 102 794

SISAL PLAIN SAND



102 748 102 793

SISAL NATUR BLACK



102 755 102 799

SISAL PLAIN BEIGE



102 745 102 791

BKB was our first collection and is enduringly popular. The collection offers a broad, neutral colour palette - a feature that optimizes design versatility - combined with a classically stylish pattern and a soft, textile feel, resulting in timeless flooring.

BOTANIC

BLANCHE



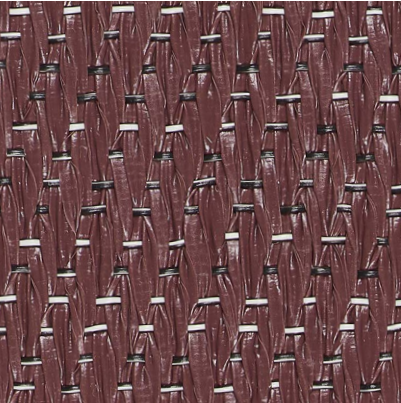
Q ■ ▨ ❖ ⌒
114 154 114 193

CANYON



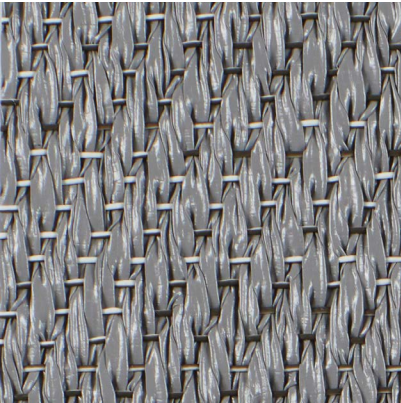
Q ■ ▨ ❖ ⌒
114 158 114 197

CHESTNUT



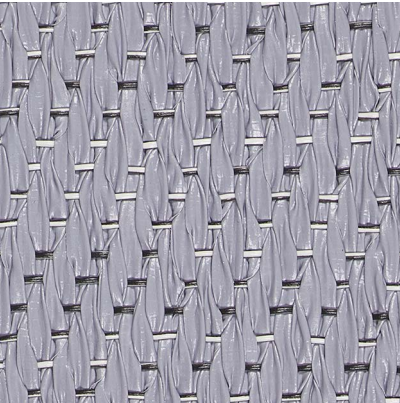
Q ■ ▨ ❖ ⌒
114 156 114 195

OSIER



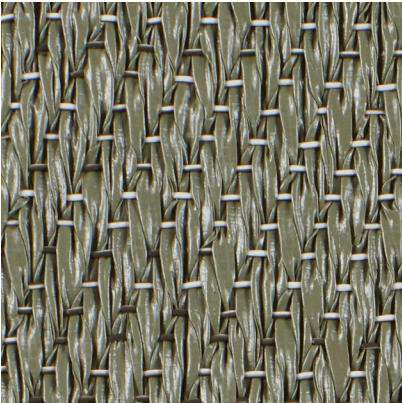
Q ■ ▨ ❖ ⌒
102 674 102 826

RAIN



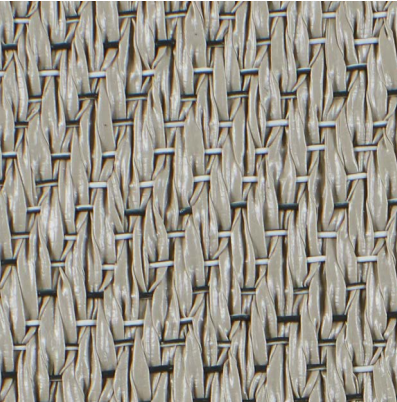
Q ■ ▨ ❖ ⌒
114 159 114 198

SAGE



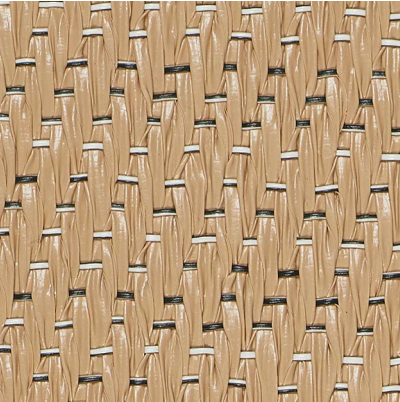
Q ■ ▨ ❖ ⌒
108 080 108 100

CILIA



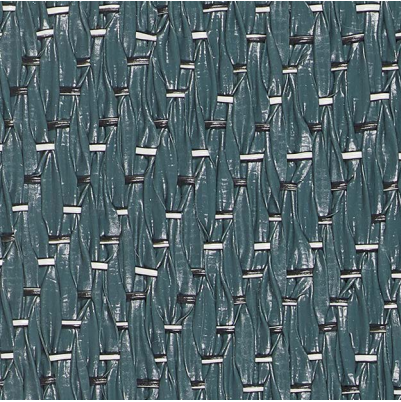
Q ■ ▨ ❖ ⌒
102 673 102 825

HONEY



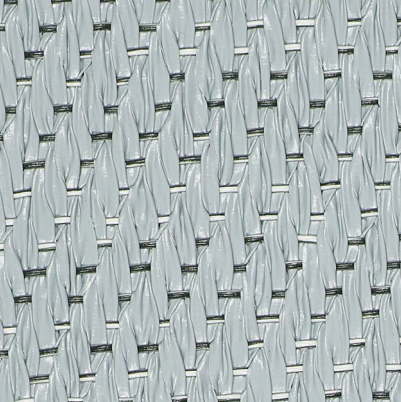
Q ■ ▨ ❖ ⌒
114 155 114 194

LIBRARY



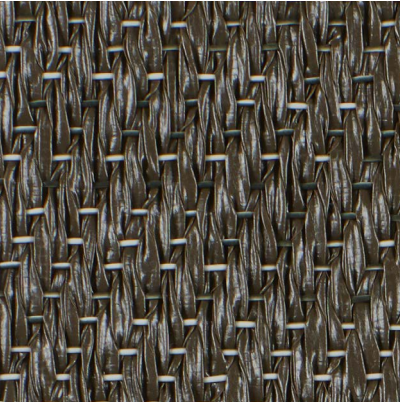
Q ■ ▨ ❖ ⌒
114 161 114 200

SPEARMINT



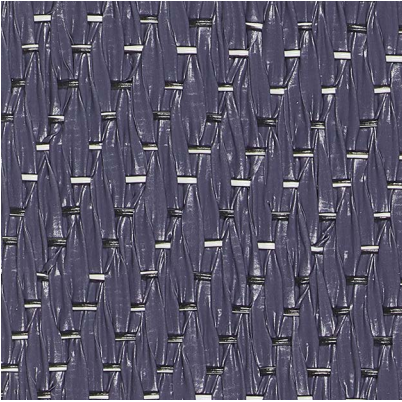
Q ■ ▨ ❖ ⌒
114 160 114 199

TILIA



Q ■ ▨ ❖ ⌒
102 671 102 823

VINTAGE



Q ■ ▨ ❖ ⌒
114 157 114 146

32

GENERAL
COMMERCIAL

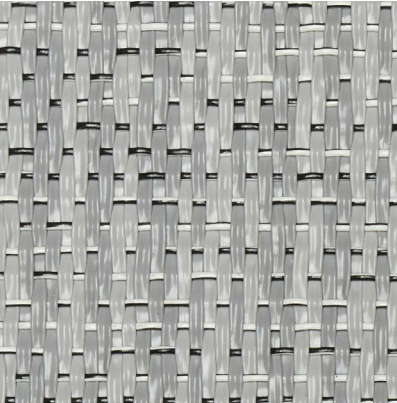
Carefully selected colour tones suitable for the tactile and soft feeling of the weave's structure. An even more balanced and long-lived colour scale, now without any sharp-edged colours. Botanic is a classic collection – elegant, embracing, and amiable.



BOTANIC: Canyon, Honey, Spearmint, Vintage

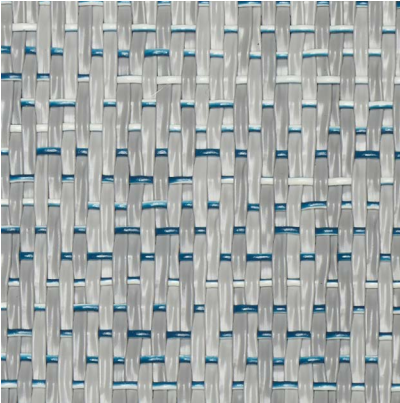
ELEMENTS

WOOL



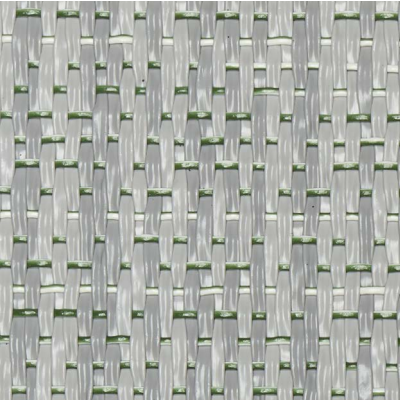
Q ■ ≡ ❖ ⌞
108 275 108 295

FLINT



Q ■ ≡ ❖ ⌞
108 277 108 297

MARBLE



Q ■ ≡ ❖ ⌞
108 278 108 298

LINEN



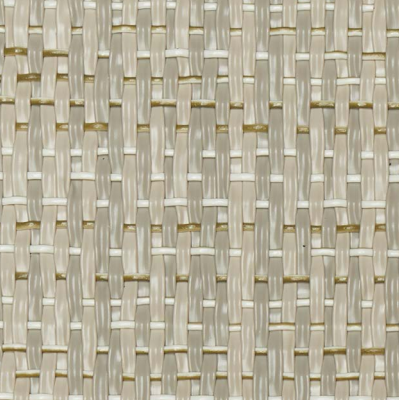
Q ■ ≡ ❖ ⌞
108 272 108 292

OAK



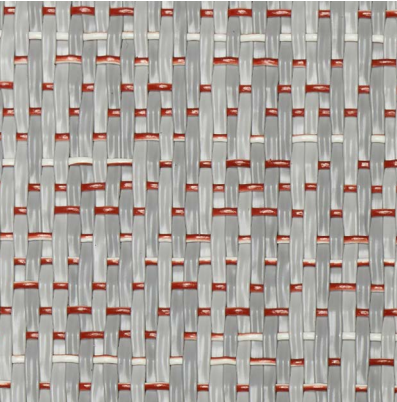
Q ■ ≡ ❖ ⌞
108 271 108 291

ASH



Q ■ ≡ ❖ ⌞
108 273 108 293

WALNUT



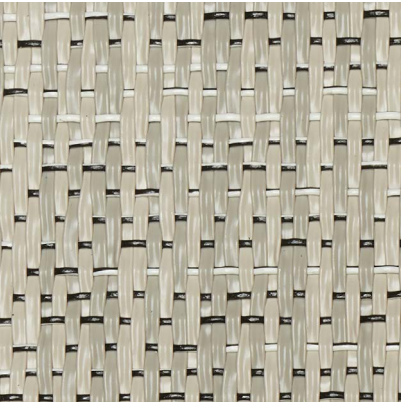
Q ■ ≡ ❖ ⌞
108 276 108 296

SILK



Q ■ ≡ ❖ ⌞
108 279 108 299

BIRCH



Q ■ ≡ ❖ ⌞
108 270 108 290

CORK



Q ■ ≡ ❖ ⌞
108 274 108 294



33

HEAVY
COMMERCIAL

The Elements collection features a balanced, natural look, drawing inspiration from nature. With its calm base colours and Scandinavian feel, the simple versatility of Elements makes it an exceptional neutral backdrop for diverse interiors.



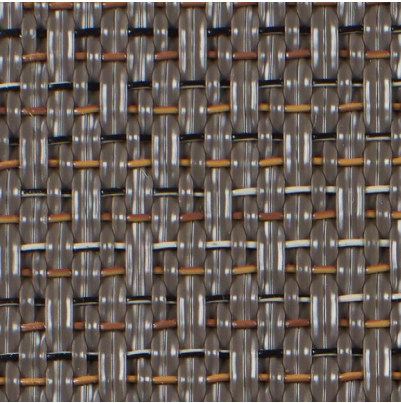
EMERGE: Drift, Sway

33
HEAVY
COMMERCIAL

Emerge is a collection revealing new neutral colours as adaptable as nature itself. It brings large flooring surfaces to life by captivating all the natural changes in light and shadow. Developed to complement the materials most used by architects, the Emerge collection offers something that is anything but basic.

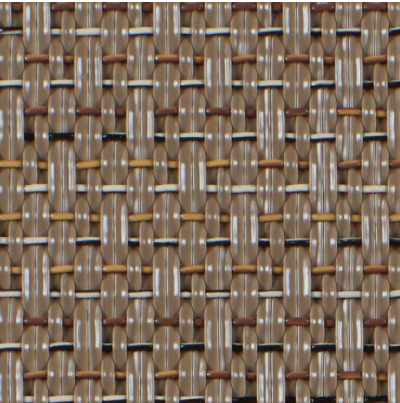
EMERGE

DRIFT



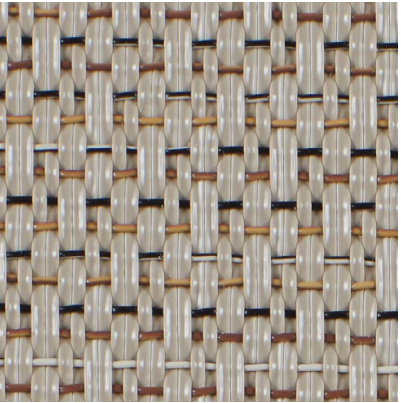
112 003 112 015

SWAY



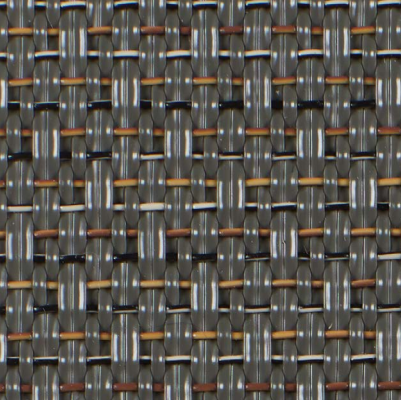
112 004 112 016

ARISE



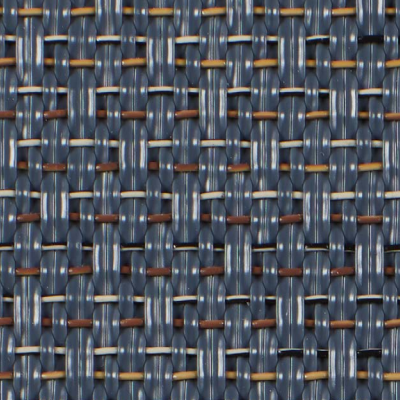
112 005 112 017

BILLOW



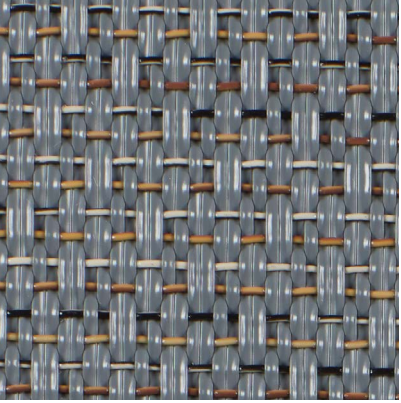
112 002 112 014

SWIRL



112 001 112 013

RIPPLE



112 000 112 012



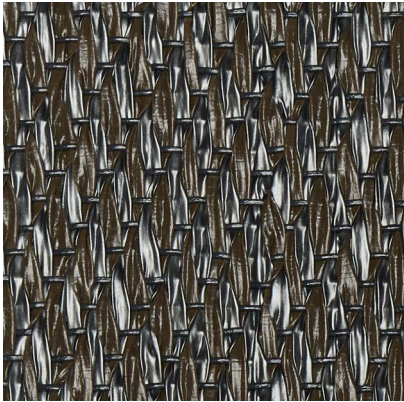
ETHNIC: Gabna

32
GENERAL
COMMERCIAL

In the north of our home country, Sweden, the culture, natural light and beauty are quite unique. Ethnic captures these characteristics, featuring patterns reminiscent of earth, stone and rock, with a futuristic metallic shimmer that suggests cold, Nordic light.

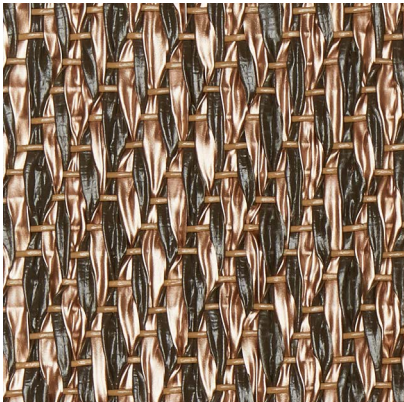
ETHNIC

ABISKO



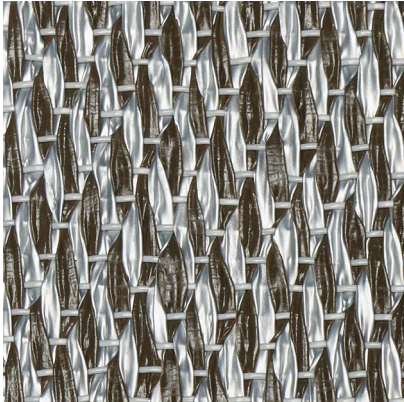
Q ■ ≡ ✦ ¶
102 763 102 807

GABNA



Q ✦ ¶
103 562

SAIVO



Q ✦ ¶
103 559

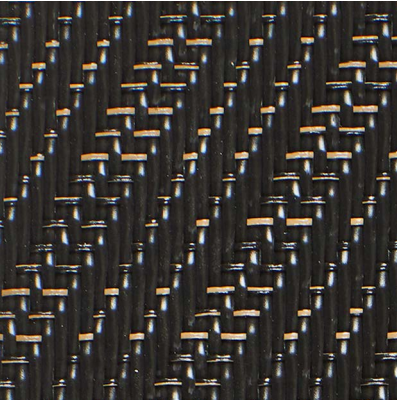
KAISE



Q ✦ ¶
107 762

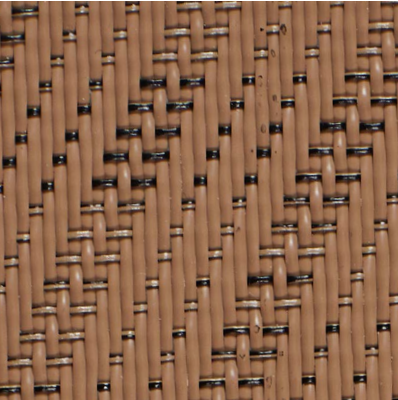
GRAPHIC

HERRINGBONE BLACK



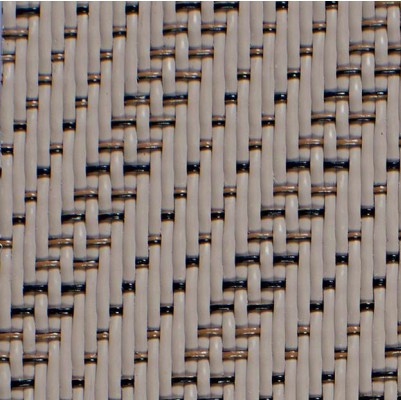
Q R
103 230

HERRINGBONE CINNAMON



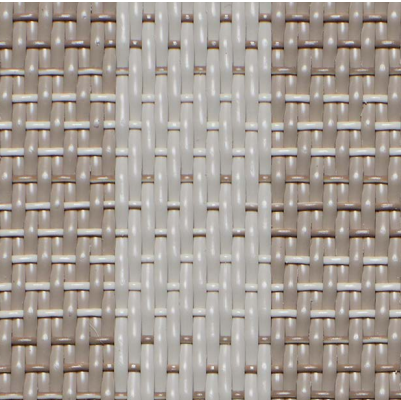
Q R
116 461

HERRINGBONE BEIGE



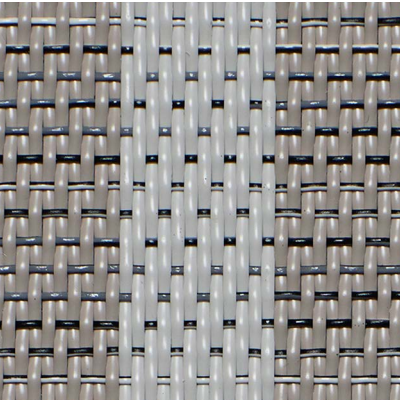
Q R
103 226

DUO BEIGE



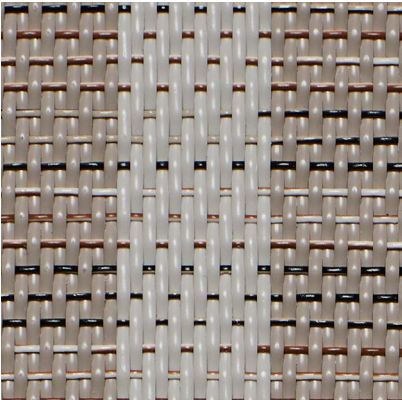
Q R
116 645

DUO GREY



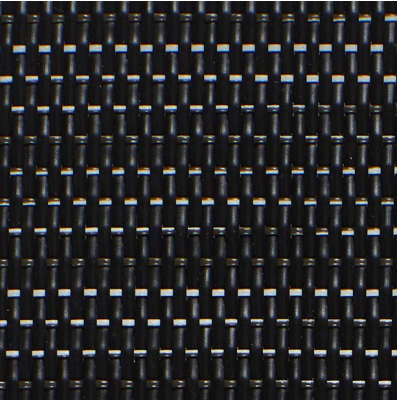
Q R
116 643

DUO CINNAMON



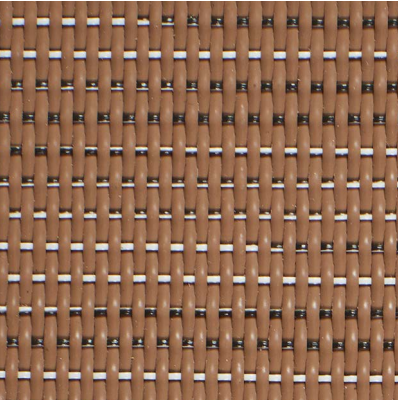
Q R
116 644

ETCH



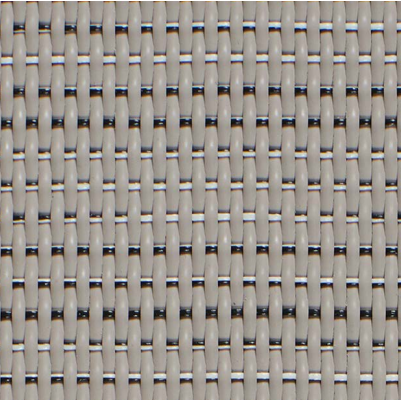
Q ■ R
102 773 102 815

TAN



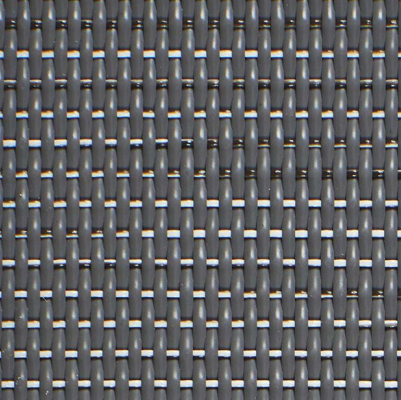
Q ■ R
116 455 116 457

MACHE



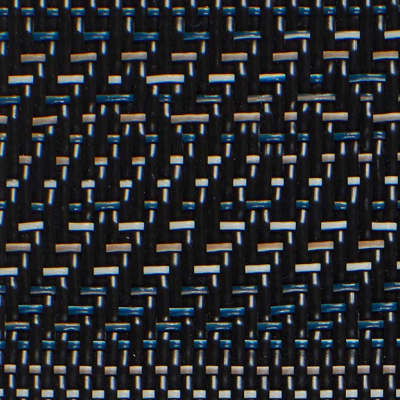
Q ■ R
102 770 102 812

STRING



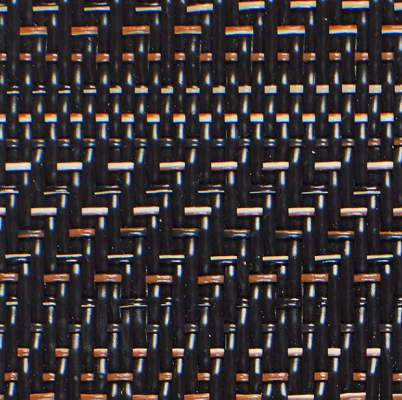
Q ■ R
102 772 102 814

GRADIENT BLACK



Q R
103 642

GRADIENT BROWN



Q R
116 623



33

HEAVY
COMMERCIAL

Graphic is our designer flooring solution created for high-traffic environments such as offices, retail outlets and other busy, public spaces. The Graphic collection is particularly well-suited for spaces where a contemporary look and high-performance must be harmonized with a classic, sober ambience.

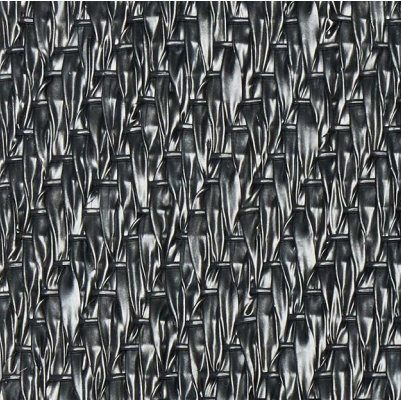
GRAPHIC: Herringbone Black



NOW: Copper

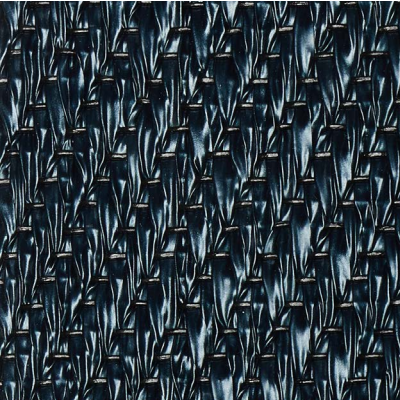
NOW

ANTHRACITE



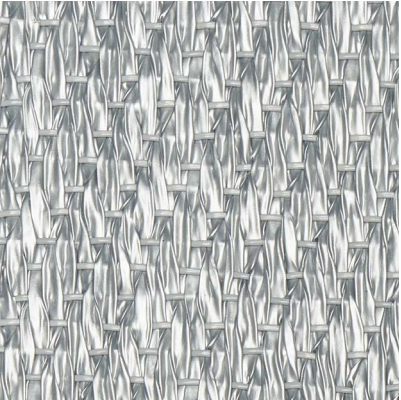
102 769 102 819

TITANIUM



108 076 108 343

SILVER



102 768 102 818

CHAMPAGNE



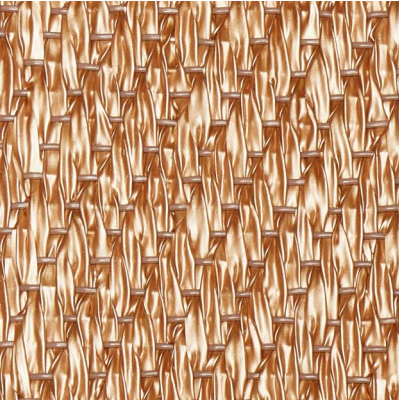
102 767 102 817

BRASS



108 078 108 341

COPPER



108 077 108 342

The Now collection adds an element of opulence and drama to its surroundings. A metallic shimmer is incorporated in the weave, resulting in visually powerful interior environments with an expressive, yet uniform whole.



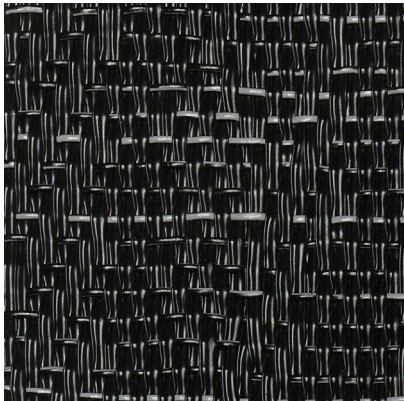
SILENCE: Balance, Sense, Illuminate, Ocular

33
HEAVY
COMMERCIAL

Silence is a sober, elegant flooring collection characterised by warm colours. Soft, structured flooring in brown and grey, inspired by nature, textiles and parquet flooring.

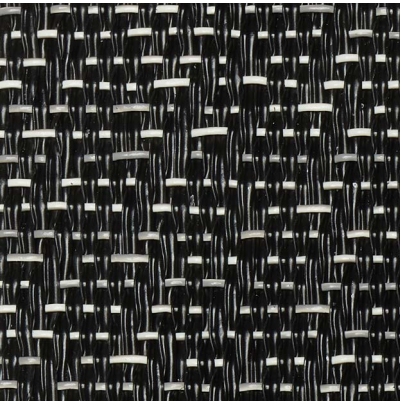
SILENCE

PAUSE



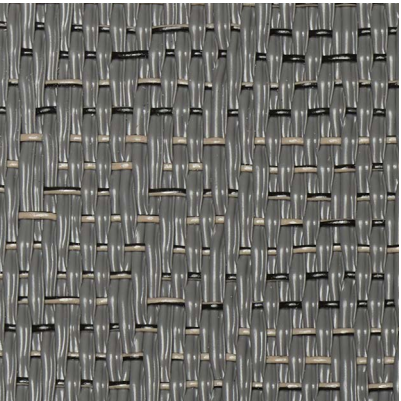
108 025 108 036 108 040 108 038

EMOTION



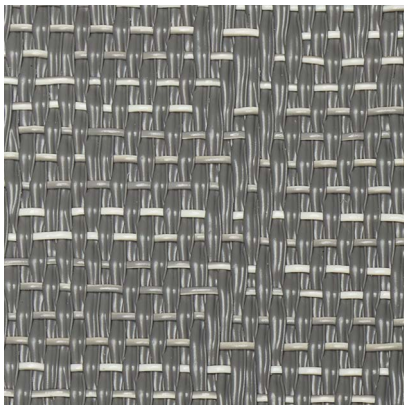
108 026 108 037 108 041 108 039

BALANCE



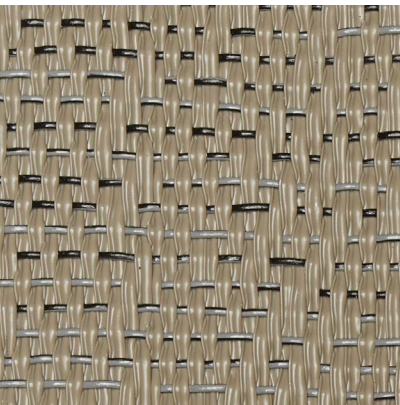
106 223 103 706 103 763 103 757

SENSE



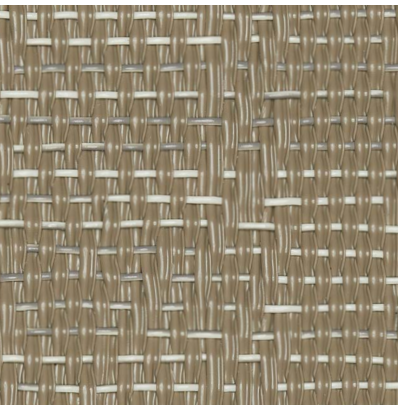
106 222 103 705 103 764 103 758

VISUAL



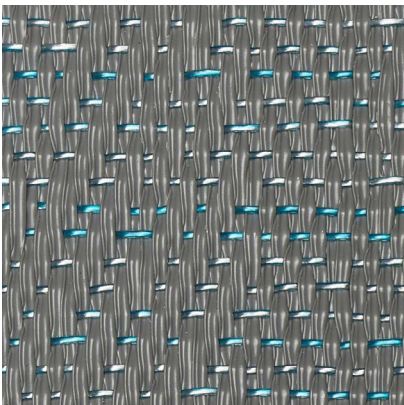
106 221 103 704 103 765 103 759

GRACIOUS



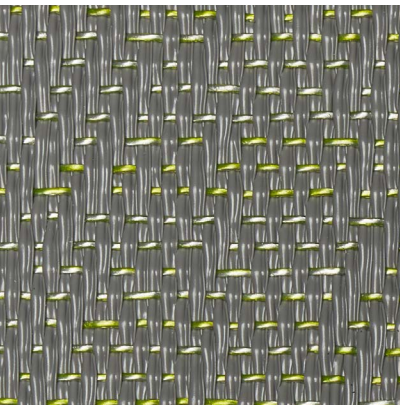
106 220 103 703 103 766 103 760

ILLUMINATE

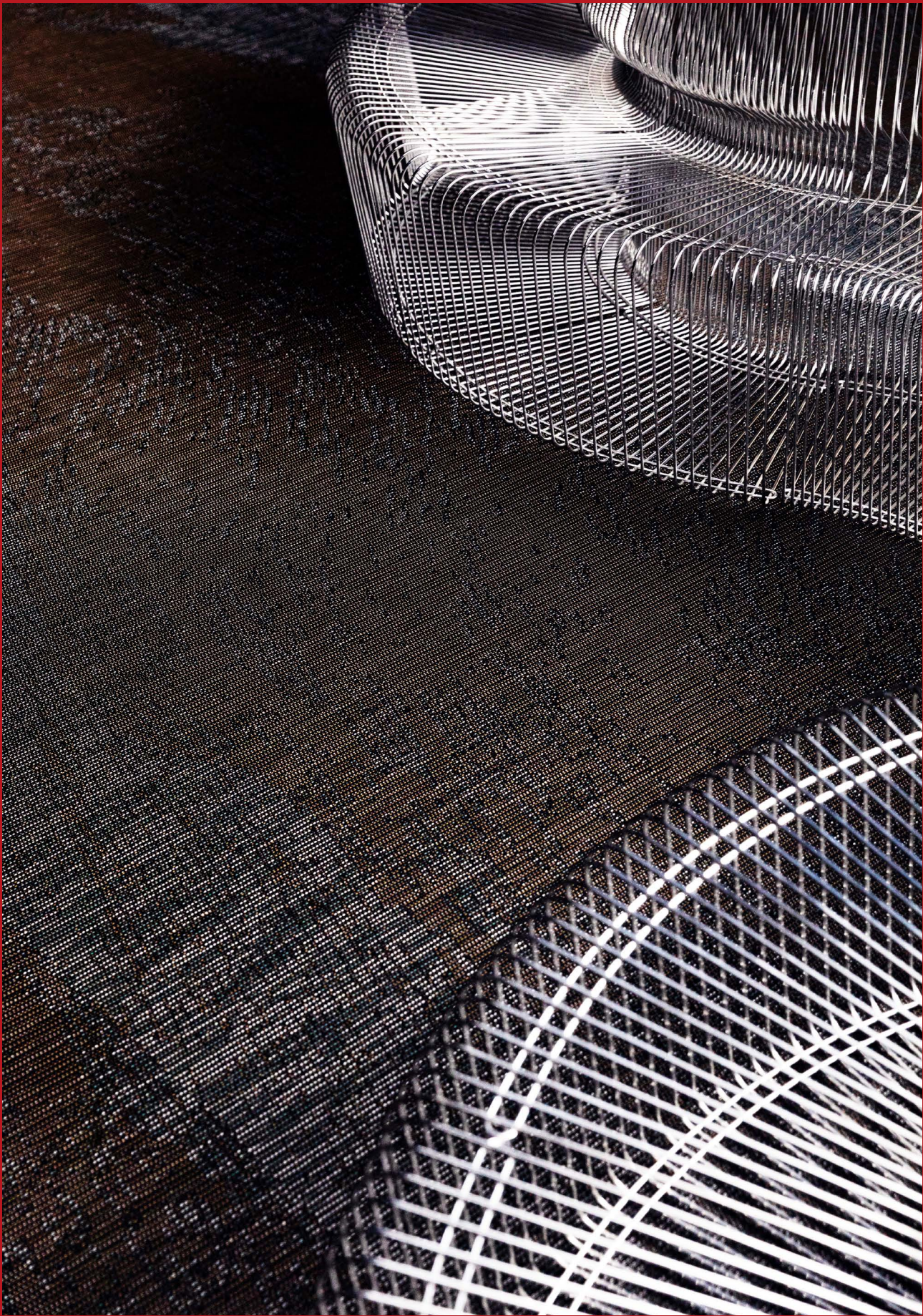


106 065 103 707 103 761 103 755

OCULAR



106 224 103 708 103 762 103 756



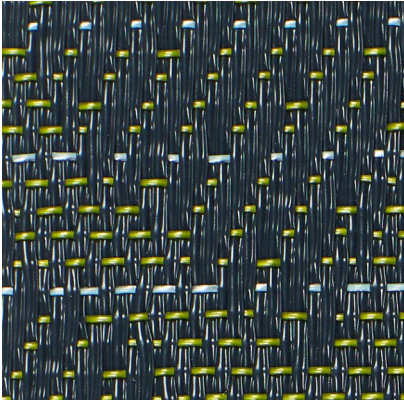
TRULY: #4 / Precis.

33
HEAVY
COMMERCIAL

Truly is an innovation. Revealing five different patterns – singular faces of Bolon – the collection plays with spatial perception creating an experience of architecture extraordinaire. Magnified formations, colour effects and hyper texture; directing light and working with scale in a way we've not seen before.

TRULY

#1 / ANYTHING EVERYTHING.



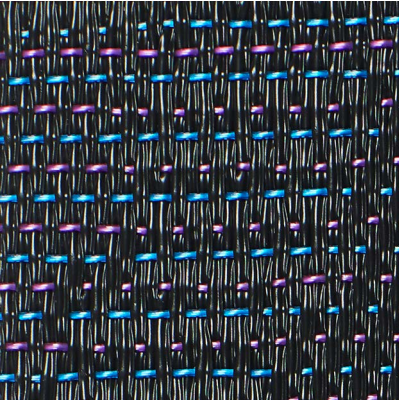
Q R
113 613

#2 / DISRUPT AND DISCOVER!



Q ■ ▨ ❖ R
113 614 113 622

#3 / 100%



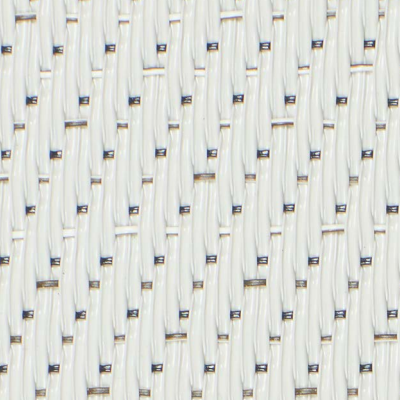
Q ■ ▨ ❖ R
113 615 113 623

#4 / PRECIS.



Q ■ ▨ ❖ R
113 616 113 624

#5 / I SEE YOU.



Q ■ ▨ ❖ R
113 617 113 625



BOLON BY PATRICIA URQUIOLA: Nude Sashiko

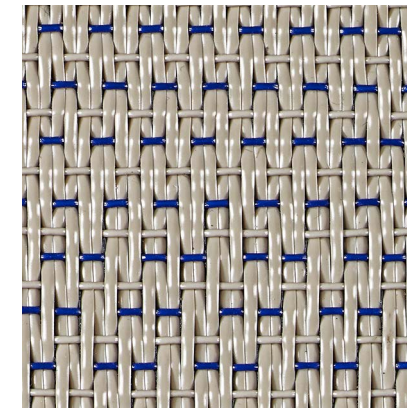
33

HEAVY
COMMERCIAL

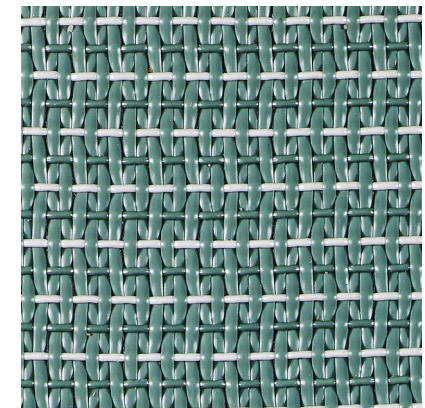
A high-end design collection adding warmth and personality to hotels, offices and other premises. The collection is designed to moderately emphasize the flooring's woven structure and the tradition of stitching techniques.

BOLON BY PATRICIA URQUIOLA

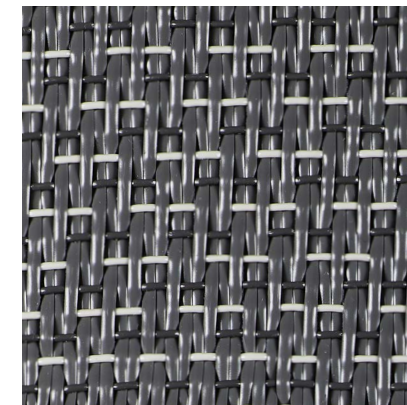
LIGHT SASHIKO

Q R
111 776

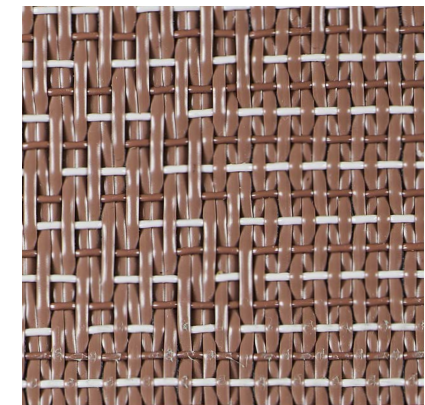
SAGE SASHIKO

Q R
111 777

GREY SASHIKO

Q R
111 778

NUDE SASHIKO

Q R
111 779



BOLON BY JEAN NOUVEL DESIGN: NO. 04

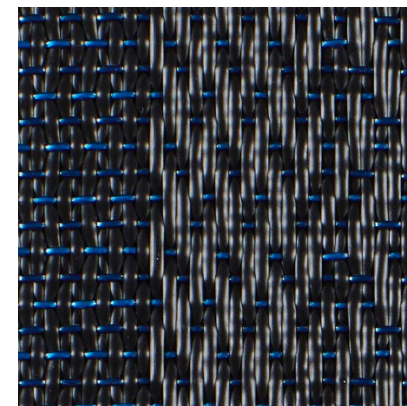
33

HEAVY
COMMERCIAL

Our collaboration with Jean Nouvel Design has led to this architect-driven flooring concept covering six colour signatures. The flooring amplifies the interior geometry, making it possible to experiment with the layout and the natural flow within an interior space.

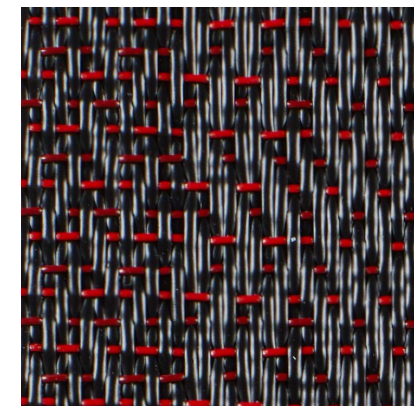
BOLON BY JEAN NOUVEL DESIGN

NO. 01



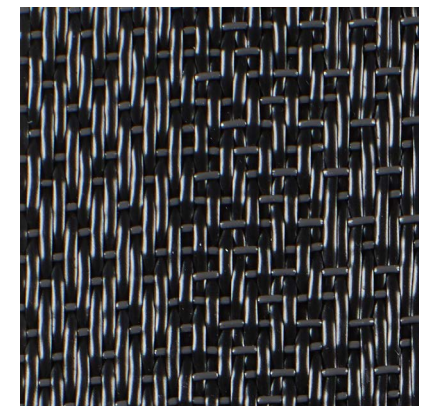
Q ■ r
106 010 106 017

NO. 02



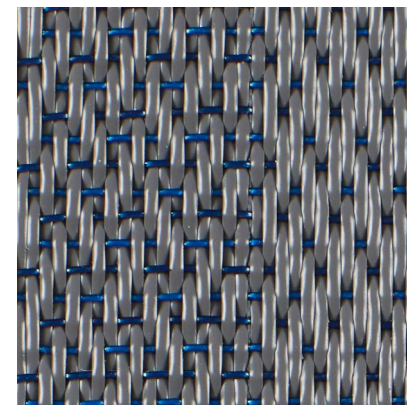
Q r
106 009

NO. 03



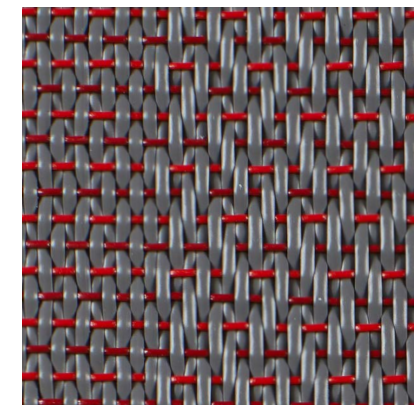
Q r
106 011

NO. 04



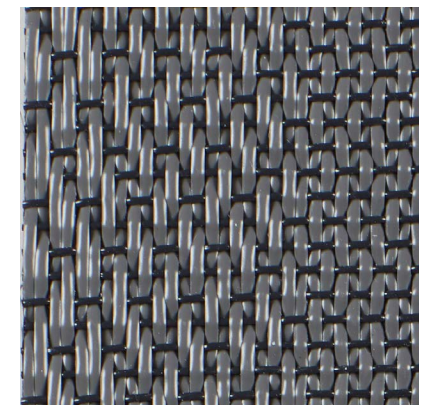
Q r
106 013

NO. 05



Q r
106 012

NO. 06



Q ■ r
106 014 106 018







BOLON BY YOU: Stripe Black Steel Grey

BOLON BY YOU

We know that every interior project is unique and sometimes requires tailored solutions. That is why we created Bolon By You: a design system that gives you the freedom to easily create personalised flooring. The concept allows you to create designs by combining roll or tile patterns with 4 warp and 12 available weft colours.

- Lets architects and designers create personalised flooring
- Weave on demand
- Environmental certifications and declarations are available
- 15-year warranty
- Durability class 33 – Heavy Commercial

AVAILABLE IN:

-  Rolls
-  Tiles
-  Acoustic flooring
-  Rugs

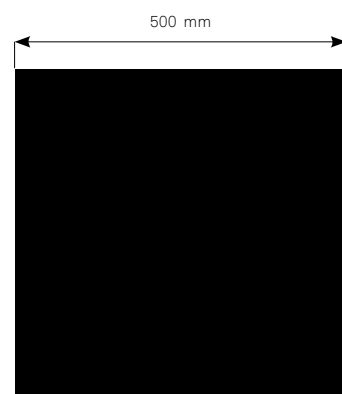
STEP BY STEP

- Choose a pattern, both rolls and tiles are available
- Choose from 4 available warp colours (the vertical yarn)
- Choose from 12 available weft colours (the horizontal yarn)
- Order a sample of your personalised design at [bolon.com](https://www.bolon.com)

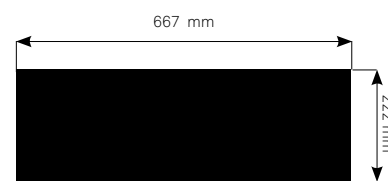
DESIGNING WITH BOLON ORIGINAL TILES

Our original tiles are readily available as stock items and can be ordered in 50 x 50 cm format (and as planks in the Silence collection). Bolon original tiles are also a slightly thicker option and a proven solution for raised floors.

50 X 50 CM TILES



PLANKS



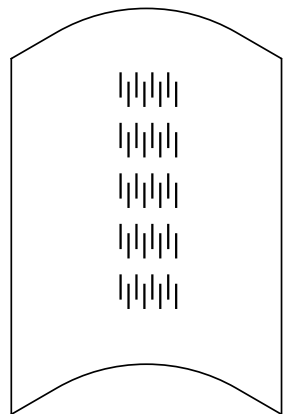
(Only available in Silence)



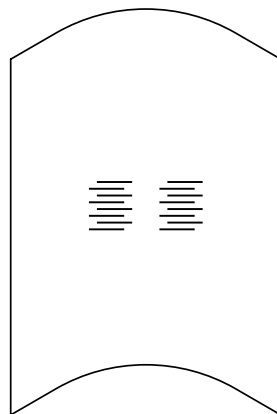
DESIGNING WITH BOLON STUDIO™

These products are made-to-order items. Always dynamic and always exact. Bolon Studio tiles are supplied in the following shapes: Link, Prism, Hexagon, Wave, Rectangle, Scale, Triangle (in three different sizes), Bigger, Wing, Pillar, and Moves.

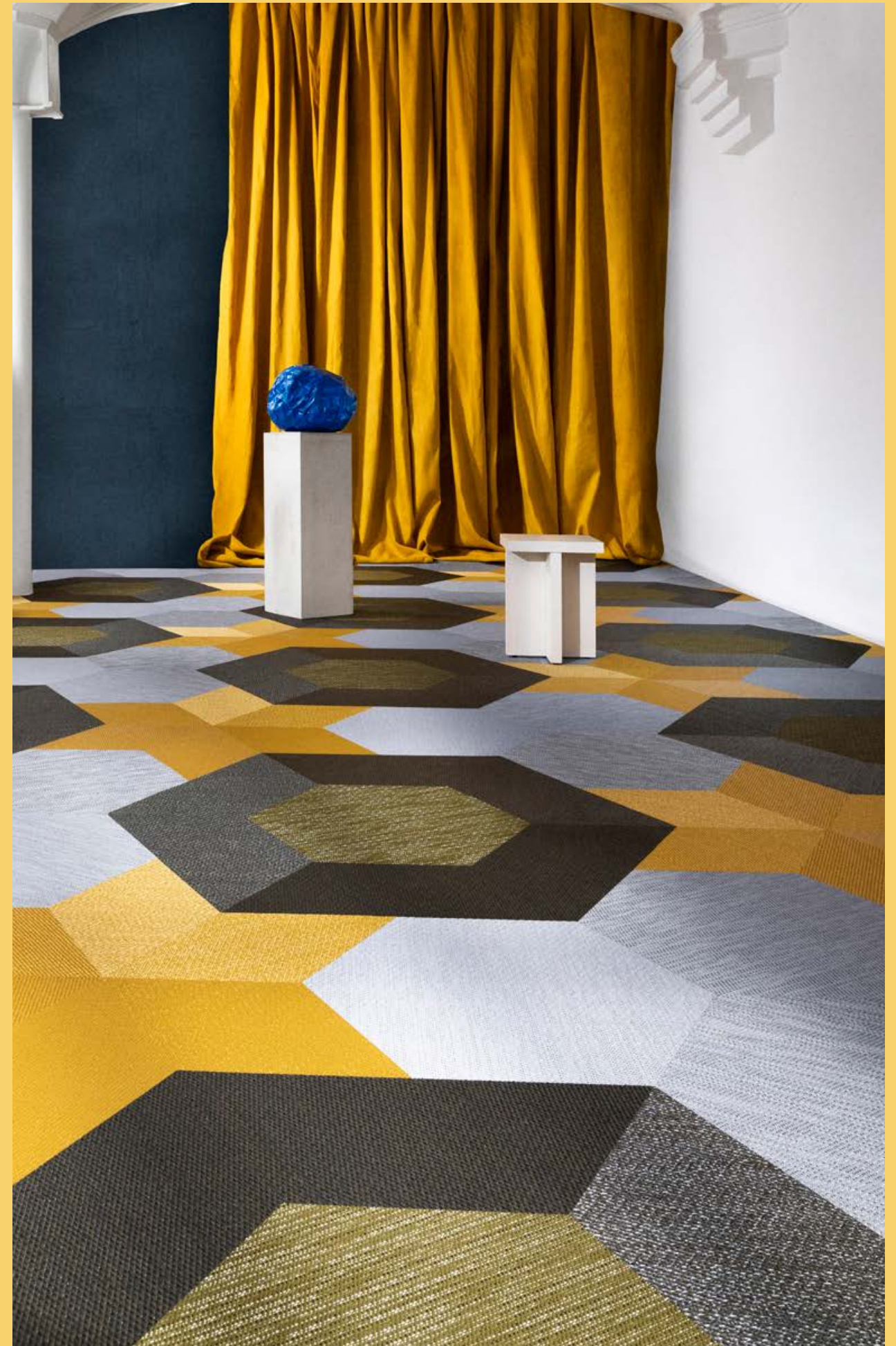
WAVE



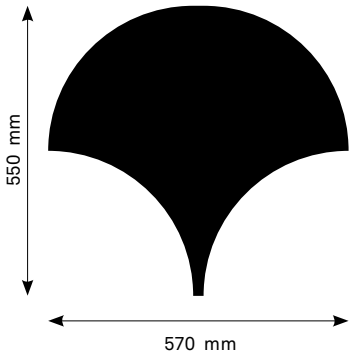
LANGER SCHUSSFADEN



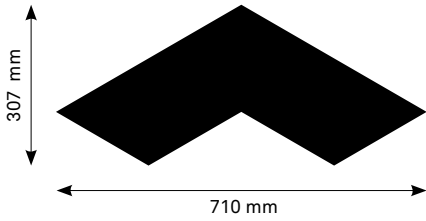
KURZER SCHUSSFADEN



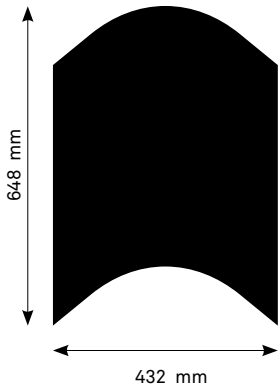
SCALE



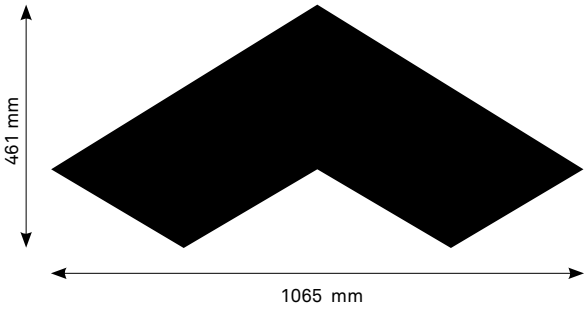
WING



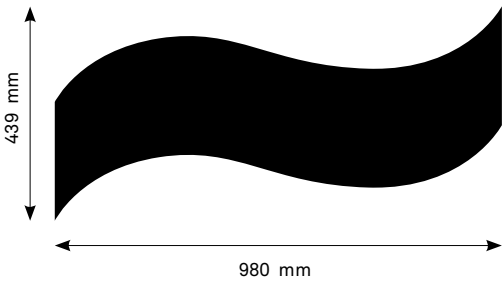
WAVE



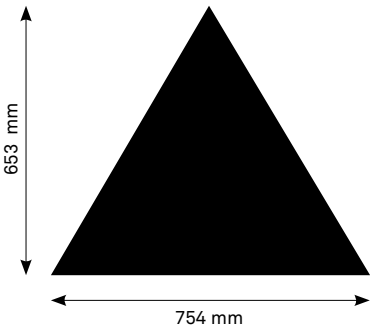
BIGGER



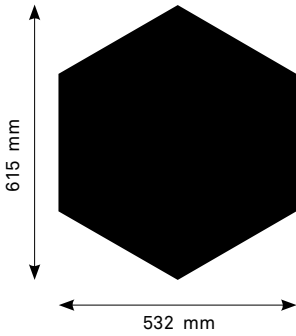
MOVES



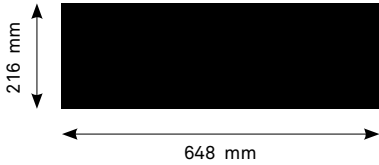
TRIANGLE 754



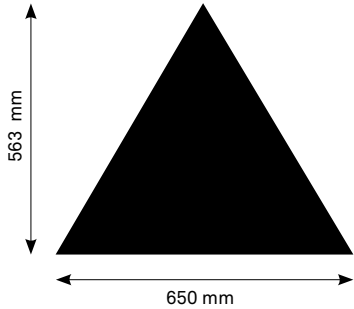
HEXAGON



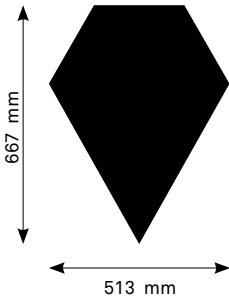
RECTANGLE



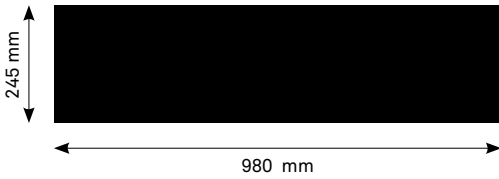
TRIANGLE 650



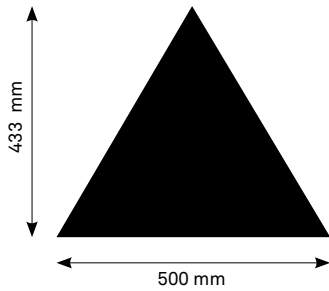
PRISM



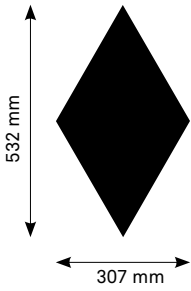
PILLAR

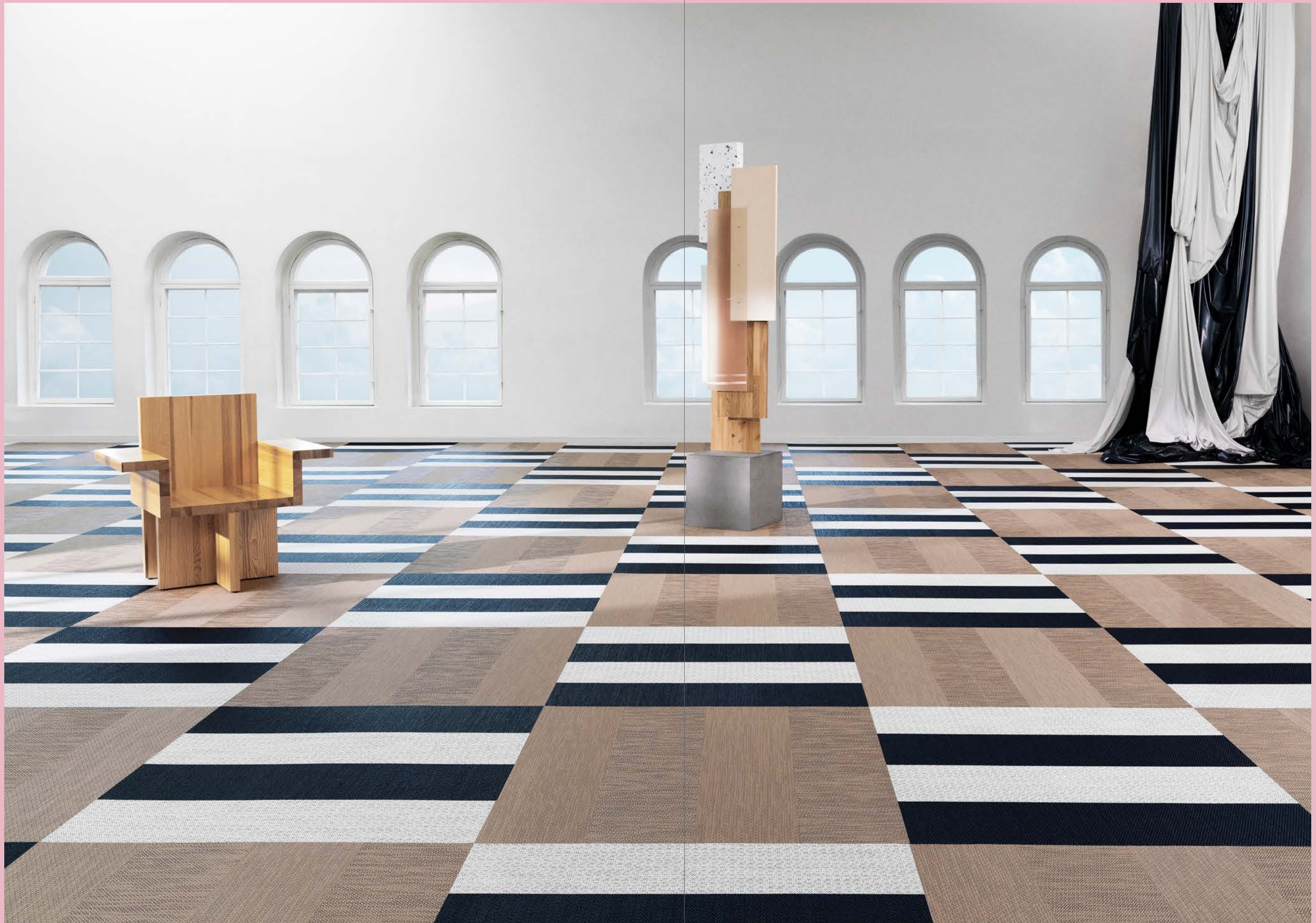


TRIANGLE 500



LINK







BOLON RUG – GRAPHIC: Herringbone Black

BOLON RUGS

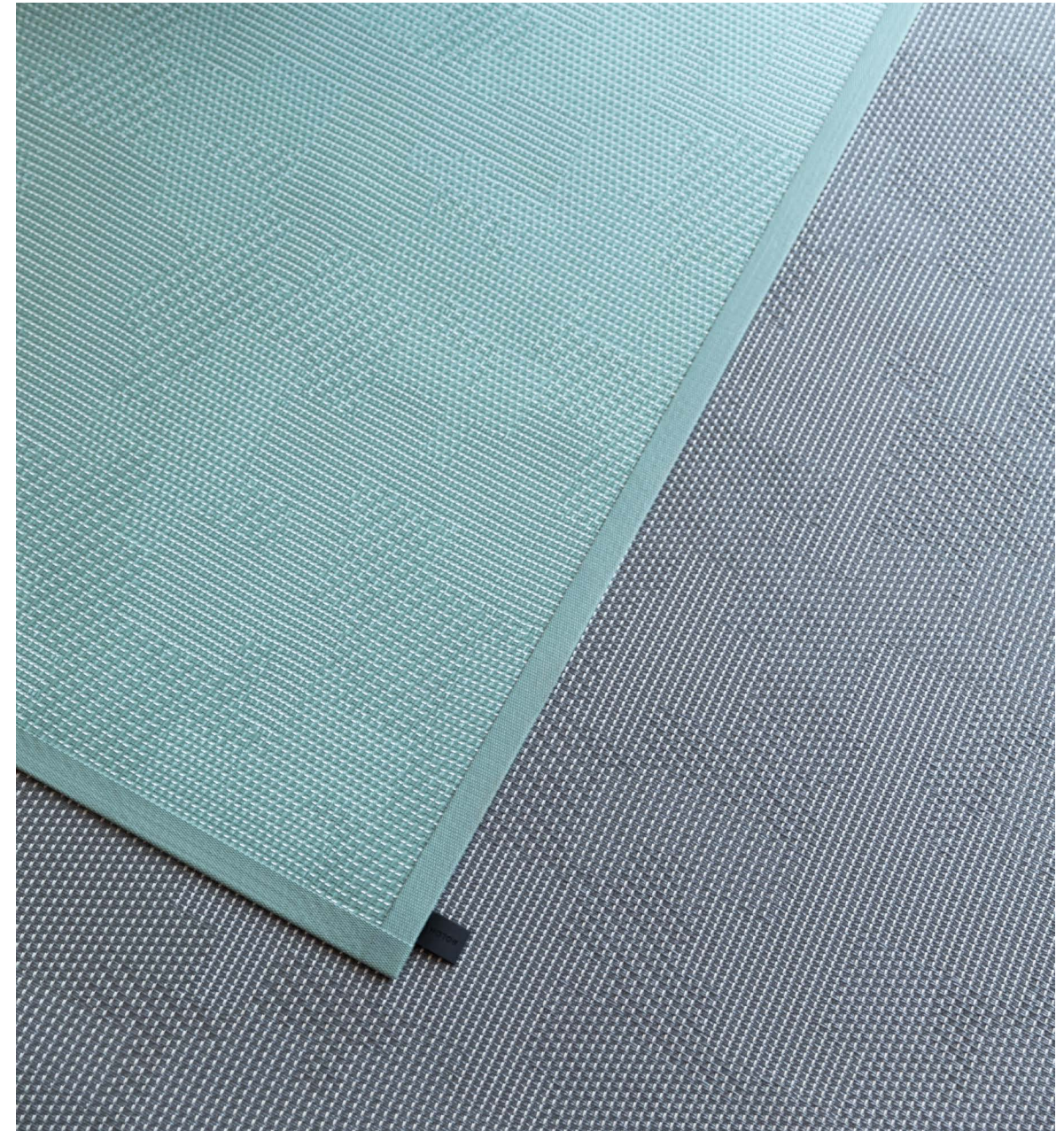
Bolon Rugs combines the benefits of Bolon flooring with the flexibility of a rug. The made-to-measure rugs are perfect for spaces where wall-to-wall coverings are not suitable.

The rugs are produced on demand in Ulricehamn, in the size and dimension you need, from 2 x 2 m to 3,9 x 8 m. Our rugs come with several trimming options available.



BOLON RUGS BY PATRICIA URQUIOLA: Sage Sashiko

RUGS BY PATRICIA URQUIOLA



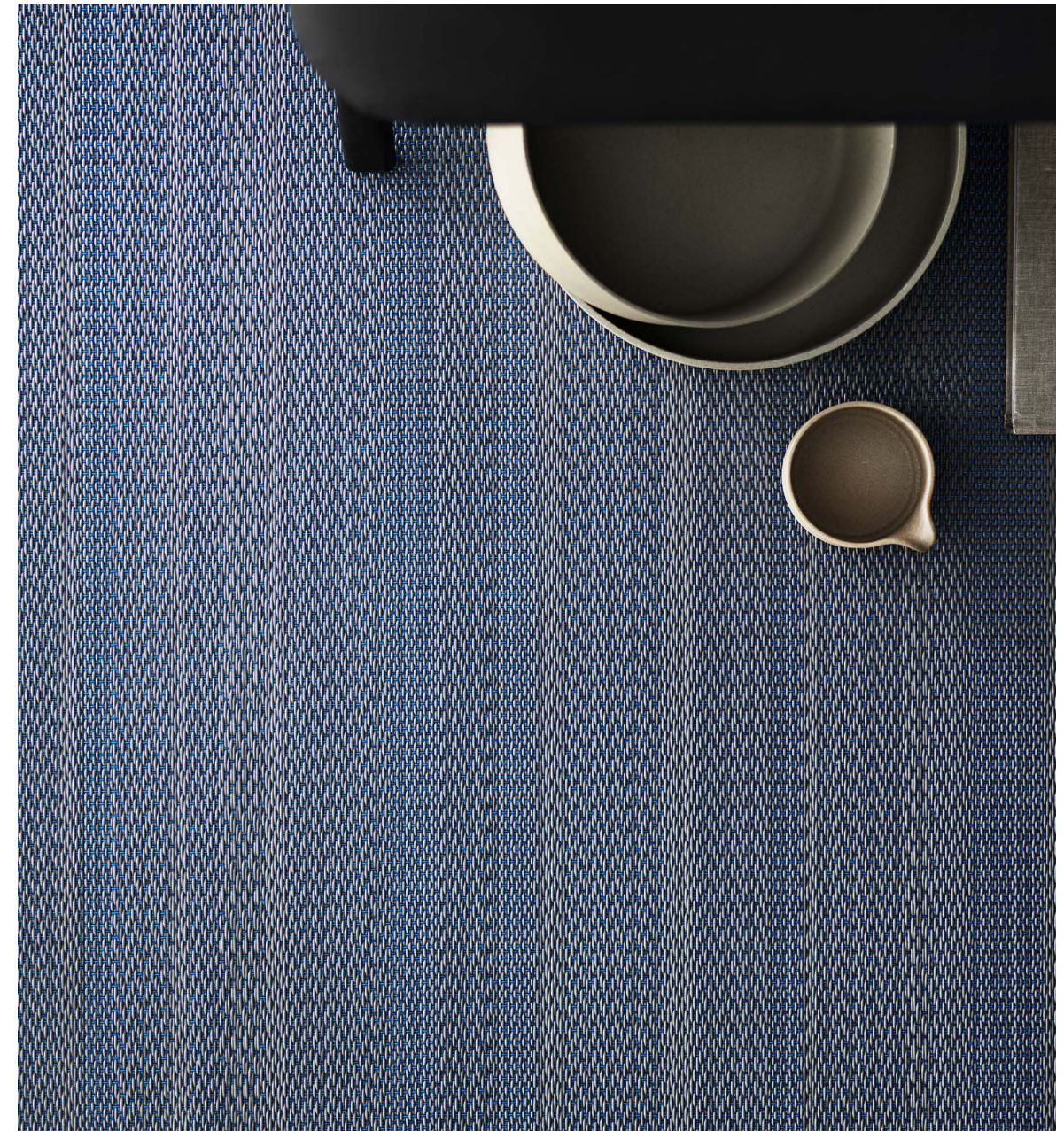
BOLON RUGS BY PATRICIA URQUIOLA: Grey Sashiko / Sage Sashiko

Bolon Rugs By Patricia Urquiola is a high-end design collection with sophisticated softness and character. The rug designs are matched with specific trimming styles in harmonising colours.



BOLON RUGS BY JEAN NOUVEL DESIGN: NO. 01

RUGS BY JEAN NOUVEL DESIGN



BOLON RUGS BY JEAN NOUVEL DESIGN: NO. 04

An architect-driven concept covering six colour signatures. The collection amplifies the interior geometry. The rug designs are matched with specific trimming styles in matching colours.

A CLOSER LOOK AT THE PRODUCT

Bolon flooring is constructed of four layers. One top-weave and three backing layers. The four layers provide the product with its unique qualities.

THE WARP

The warp is the vertical vinyl yarn that together with the horizontal weft forms the weave. Two different kinds of warp can be used in Bolon flooring, extruded or folded.

The extruded warp is profiled and comes in solid monochrome colours. The folded warp comes in solid monochrome or metallic shades.



THE WEFT

We extrude our own Bolon weft yarn at our production plant in Ulricehamn. Each thread is extruded into a mono or co-ex line, each with a polyester core.

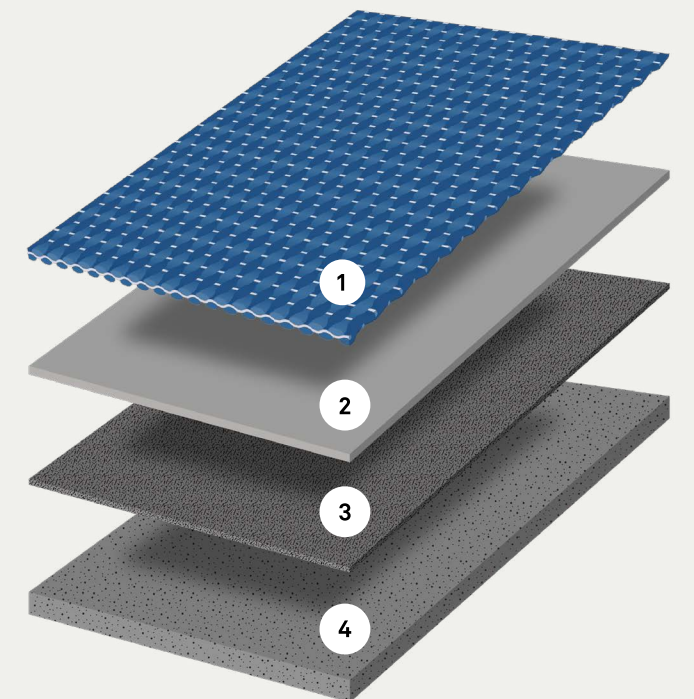
THE WEAVE

The weave layer is formed by vinyl warp and weft threads woven together tightly. The variations of the warp and weft yarn together with the different weaving techniques, and different looms, gives Bolon flooring its vast design possibilities.



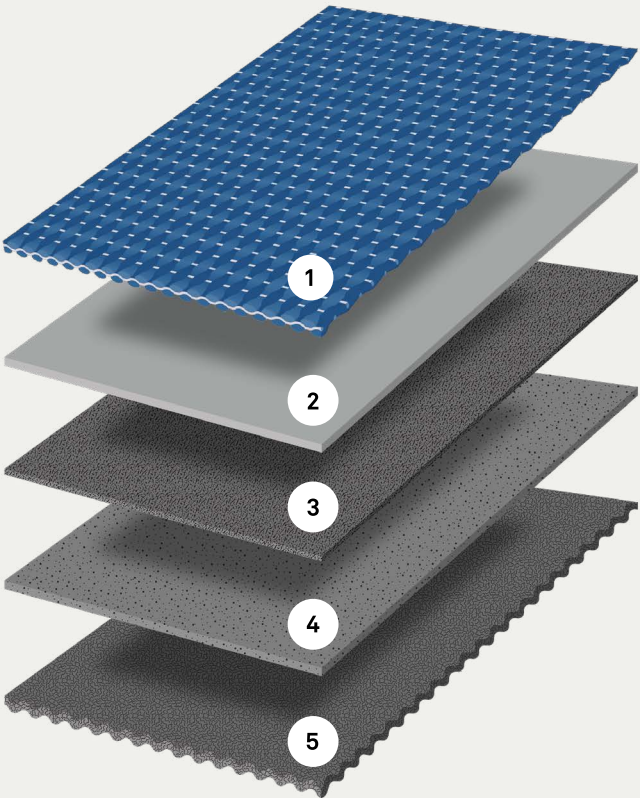
LAYERS

1. The weave layer consists of vinyl warp and weft yarns tightly woven together
2. The upper backing layer gives the flooring its robustness
3. The middle backing layer consists of glass fibre giving the flooring dimensional stability
4. The bottom backing layer defines the thickness of the flooring and contains recycled material



ACOUSTIC FLOORING

With the sound insulation layer, our acoustic flooring is a great choice for premises where sound matters. This is a perfect feature for rooms where you need acoustic insulation to the floor below.



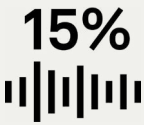
LAYERS – WITH SOUND INSULATION

- 1. The weave layer consists of vinyl warp and weft yarns tightly woven together
- 2. The upper backing layer gives the flooring its robustness
- 3. The middle backing layer consists of glass fibre giving the flooring dimensional stability
- 4. The bottom backing layer defines the thickness of the flooring and contains recycled material
- 5. The sound insulation layer consists of a felt material, containing recycled PET bottles, that helps to reduce the impact of sound and noise



<22dB IMPACT NOISE REDUCTION

A floor's ability to reduce impact noise is defined by the measured sound level in the room below. The given value describes the reduction of transferred noise. By incorporating a felt layer, the impact noise reduction of our acoustic flooring is 21–22 dB.



15% 15% SOUND ABSORPTION

The sound absorption coefficient defines a flooring's ability to absorb airborne sound. With Bolon acoustic flooring this coefficient is 0.15, meaning that the flooring absorbs 15% of the sound energy. The result is a room with a positive acoustic performance, providing a more comfortable indoor environment.



90% RECYCLED PET BOTTLES

Bolon acoustic flooring sound insulation is partly made from recycled production waste and PET bottles.

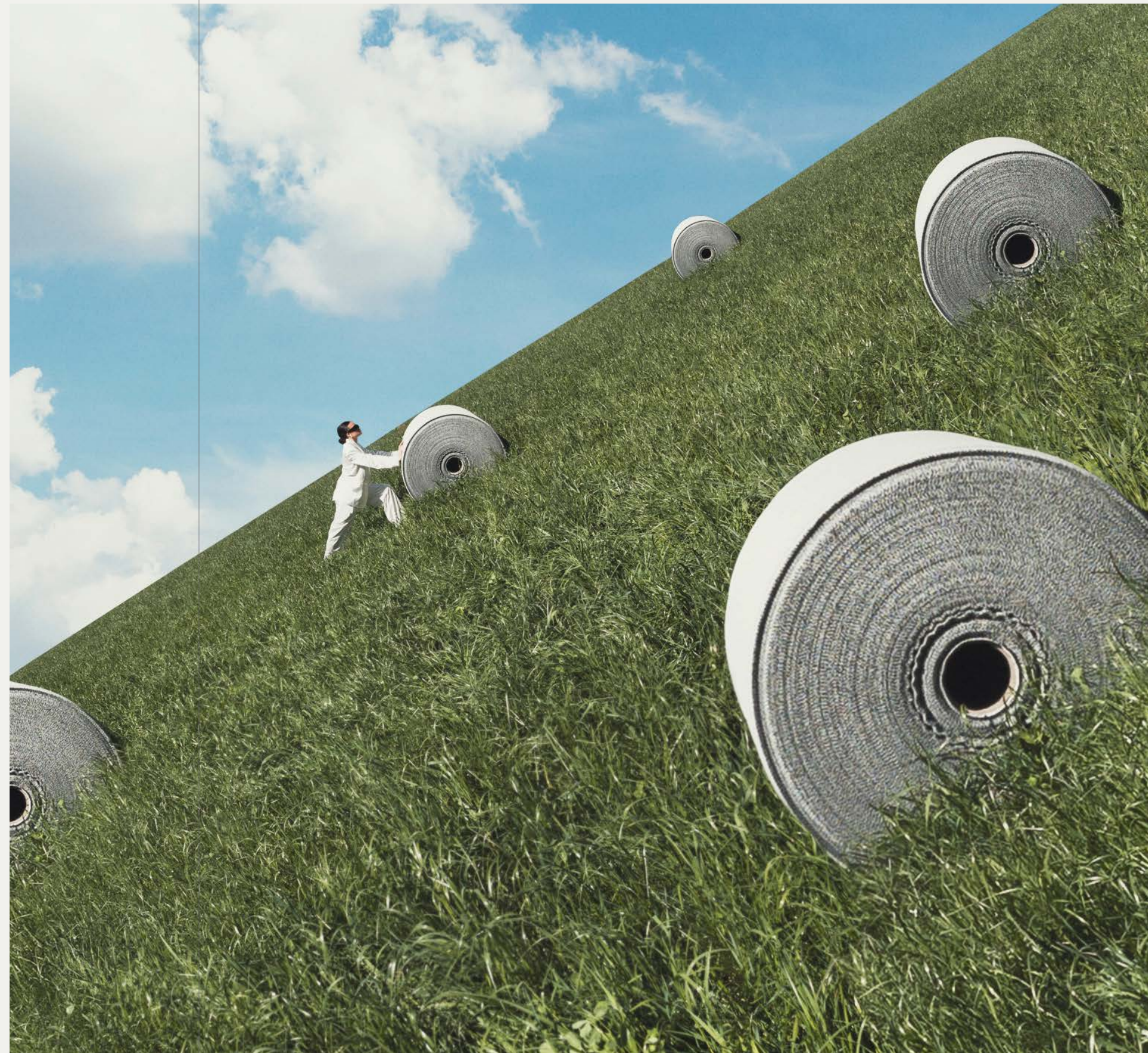


ADDING ON TO BOLON PERFORMANCE

The acoustic flooring upholds performance in durability, self-extinguishing fire performance, warranty, and water resistance; adding to the list of unique characteristics of Bolon flooring while also increasing underfoot comfort and softness.

WE'RE PUSHING RECYCLING IN THE DESIGN INDUSTRY

Bolon started production 75 years ago with a bold idea: to produce woven rugs from waste material. Recycling is an important part of who we are as a company. We are proud that our sustainability work covers all our products and not just selected niche collections. Because we know that recycled material is the solution for both climate and circularity. All Bolon floors are made with 100% renewable energy and contain 68% recycled material. As innovators, we continue our ambitious work towards our vision, to thrill the world with brave innovation for a sustainable design experience.



PRODUCTION

All Bolon floors are manufactured at our factory in Ulricehamn, Sweden, using energy from our own solar panels.

CIRCULARITY

All our products contain 68% recycled material with a 0% climate impact.

CLIMATE

We have third-party verified EPDs (Environmental Product Declarations), which provide transparency and comparability of our products' climate impact. Our factory runs on 100% renewable energy, making our production climate-neutral.

MATERIAL

All Bolon flooring contains BIO-sourced PVC by using pulp and paper industry waste, recycled PVC from window frames and pipe waste and recycled chalk from marble slab production, glass fibre and non-hazardous additives.

CHEMICALS AND VOC EMISSIONS

Our products are free from heavy metals and hazardous phthalates and fulfil strict requirements of VOC (Volatile Organic Compound) emissions during use.





ELEMENTS: Flint

DESIGNED FOR THE LONG RUN

Our unique layered structure results in impressive durability qualities. The top layer is made from our own threads, creating the characteristic Bolon look and the flooring's resilience. The backing layers enhance the product's performance. This makes Bolon not only your best design choice, but also, your best long-term investment.

SUITABLE FOR COMMERCIAL ENVIRONMENTS

A Bolon flooring is both durable and resilient, following ISO 10874 standard. Depending on product use, classification is 32 (General commercial) or 33 (Heavy commercial).

LONG SERVICE LIFE

A Bolon flooring retains its appearance without flattening, making it a perfect solution for high-intensity commercial environments. Our products are designed and produced to last throughout their long service lives.

WARRANTY

All flooring collections come with a 10- or 15-year warranty depending on the product.

WATER RESISTANCE

Bolon flooring is water resistant and does not allow water to penetrate. However, it shall not be used as a waterproofing/sealing layer in areas like bathrooms.

FIRE RATING

Bolon flooring complies with the requirements in the European standard EN 13501-1 (fire classification of construction products) and has achieved a rating just below non-combustible material. This classification is called BflS1 and includes both fire and smoke production. Bolon flooring is approved for emergency exit routes in Sweden.

ACOUSTICS

The impact sound insulation varies for different products from 9 dB to 14 dB. With Bolon acoustic flooring, the impact noise reduction is 21–22 dB.

NON-SLIP

CE certification for the floor includes a slip resistance assessment. The lowest value for materials used in public areas is 0.3. Bolon's collections have a slip resistance value of >0.5.

ANTI-STATIC

Bolon flooring does not generate a static charge. Our flooring has been tested and fulfils the requirements of the European Directive EN 1815.





EASY TO CLEAN

One of Bolon flooring's key benefits is its ease of cleaning and maintenance. Thanks to the tightly woven vinyl structure and the layers of solid backing, the flooring is impervious to liquids and resilient enough for almost any spill or mess.

ECO-FRIENDLY CLEANING

Most of the cleaning can be accomplished with a vacuum cleaner and scrubbing brush. During Bolon flooring's long product lifecycle, most cleaning can be done with only clean water.

HYPOALLERGENIC

Bolon flooring is impervious to liquids and has no exposed fibres where dust, dirt, or debris can hide. The result is flooring with less risk for mold spores to thrive. Our flooring is recommended by the Norwegian Asthma and Allergy Association as they contribute positively to indoor air quality.

CLEANING METHODS

We recommend vacuum cleaning for daily maintenance. For larger areas, mechanical cleaning with a roller brush or ORBOT method is recommended at the frequency required by the specific environment.

DISINFECTION

If needed, the flooring can be disinfected. If so, make sure to rinse away all chemicals to avoid any damage to the floor.

See the Support page on [bolon.com](https://www.bolon.com) for more information



CERTIFICATIONS & DECLARATIONS

Our products and processes have been awarded stringent environmental and health certifications for buildings. These third-party verified certifications are one way of demonstrating and communicating environmental quality. Our declarations provide transparency and availability for everyone. Because Bolon operates in many different markets, we have many different certificates and declarations.

**FOR FULL PRODUCT SPECIFICATIONS
AND CERTIFICATIONS:**



OUR REFERENCE PROJECTS

Using Bolon flooring when creating interiors opens design possibilities that are both beautiful and functional. With a broad palette of shapes, colours, and expressions, only the imagination sets the limitations. We are very proud of all projects worldwide where our design floorings provide a foundation for great interior experiences. The floorings are used in a wide range of commercial interiors such as **offices, hotels, education, retail venues, healthcare,** and **other** facilities such as museums and restaurants.

NOW: Champagne / Silver / ETHNIC: Kaise / BOTANIC: Osier



OBJECT: DTI GROUP

LOCATION: WIJK
EN AALBURG,
NETHERLANDS

SIZE: 590 M2

ARCHITECT: VEVS,
ROB VAN SPRANG +
MARTIJN D'HERRIPON

FLOORING:

NOW

Champagne, Silver

ETHNIC

Kaise

BOTANIC

Osier

HOTEL

Courtyard by Marriott City Center Berlin

Berlin, Germany



OBJECT: COURTYARD
BY MARRIOTT CITY
CENTER BERLIN

LOCATION: BERLIN,
GERMANY

SIZE: 7370 M2

FLOORING:
CUSTOM
Marriott Fade

CUSTOMISED

OFFICE

Kesko K-Kampus

Helsinki, Finland



OBJECT:
KESKO K-KAMPUS

LOCATION: HELSINKI,
FINLAND

SIZE: 4500 M2

ARCHITECT: JKMM/
DSIGN VERTTI KIVI & CO

FLOORING:
ELEMENTS
Birch, Wool
BKB
Sisal Natur Black
NOW
Copper
ETHNIC
Abisko, Gabna
ARTISAN
Ecrú

ELEMENTS: Birch, Wool / **BKB:** Sisal Natur Black / **NOW:** Copper /
ETHNIC: Abisko, Gabna / **ARTISAN:** Ecrú

HEALTHCARE

Zpdz Zahnpraxis der Zukunft GmbH

Düsseldorf, Germany



OBJECT: ZPDZ
ZAHNPRAXIS DER
ZUKUNFT GMBH

LOCATION:
DÜSSELDORF,
GERMANY

SIZE: 480 M2

ARCHITECT:
KAMLEITNER CANALES
ARCHITEKTEN

FLOORING:
GRAPHIC
Herringbone Black

GRAPHIC: Herringbone Black

RESTAURANT

Le
Braci

Warsaw, Poland



OBJECT:
LE BRACI

LOCATION: WARSAW,
POLAND

SIZE: N/A

ARCHITECT: KACPER
GRONKIEWICZ STUDIO

FLOORING:
ARTISAN
Jade

ARTISAN: Jade

RETAIL

Kvænum Kök

Copenhagen, Denmark



OBJECT: KVÄNUM KÖK

LOCATION:
COPENHAGEN,
DANMARK

SIZE: 50 M2

ARCHITECT:
GRETHE HOLST

FLOORING: ELEMENTS:
Cork

ELEMENTS: Cork

HEJ, CONTACT US!

We are based in Sweden – but our products are truly global. With representatives across five continents, help is never far away.

To ensure you receive the best possible support, we work with skilled local distributors. Our representatives are located in many countries and in certain areas we also stock products. As well as providing sales assistance, many of our local partners can offer integrated solutions for installation and maintenance. Please visit **[bolon.com](https://www.bolon.com)** for more product information or to find your local Bolon representative.

