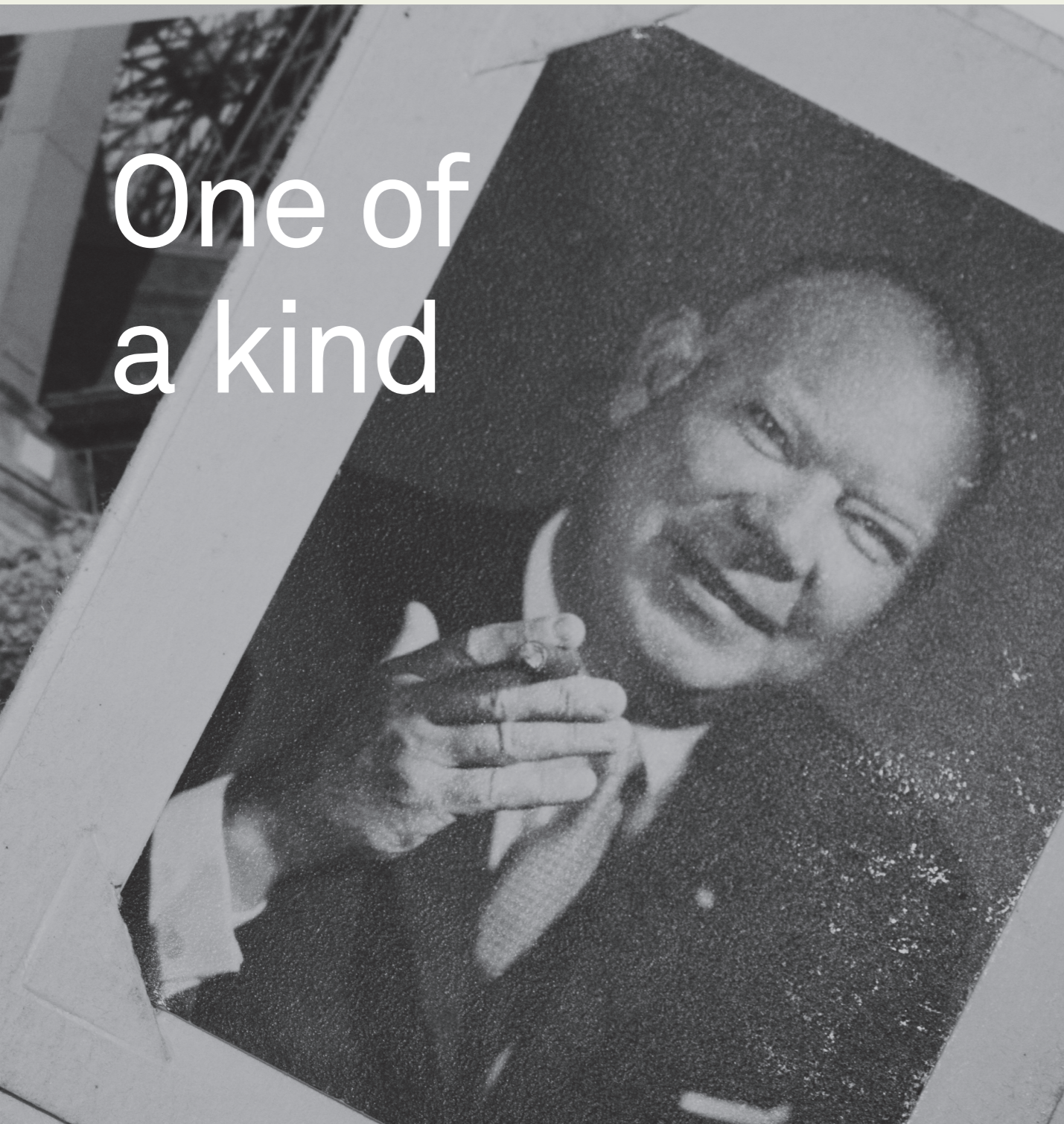


MULTI FAMILY RESIDENCE

Be inspired by projects from all over the world and explore how others have used our floorings to create spaces to thrive in.



BOLON



One of a kind

STOCKHOLM, SWEDEN – 1949

A young man called Nils-Erik Eklund had the foresight and business acumen to see a great opportunity in the piles of textile waste being produced at a neighbouring factory. From this waste, rag rugs were produced – and three generations and countless exciting twists and turns later, Bolon is a flooring solution that meets the exacting demands of retail businesses the world over.



ULRICEHAMN, SWEDEN – 2020

Bolon is an internationally acclaimed manufacturer of superior quality woven vinyl flooring. We draw our influences from the world of fashion, designing and producing unique woven floors for creative and inspiring environments. Our clients include international brands and we collaborate with world-famous designers and architects. Whilst this gives us immense satisfaction, we are equally proud to offer a

product that represents a pragmatic, functional and environmentally considerate choice for commercial premises of every type and size.

So welcome to our world – a world where innovation, borderless creativity and focused practicality combine to offer you flooring that is truly one of a kind.



BOLON STUDIO TRIANGLE: SILENCE: Emotion / NOW: Champagne, Titanium / ETHNIC: Gabna

- 03 THE STORY
- 07 INTRO
- 09 DURABILITY
- 11 CLEANABILITY
- 13 ACOUSTIC FLOORING
- 15 SUSTAINABILITY & WELLNESS
- 17 ENTRANCES
- 19 CORRIDORS
- 21 COMMUNAL AREAS / LOUNGES
- 23 OUTDOOR COMMUNAL / GYMS / LIBRARIES
- 25 BEDROOMS/ APARTMENTS
- 27 CASE STUDY
- 31 CERTIFICATES / FAQ'S
- 33 CONTACT



BOLON SILENCE: Balance

ARCHITECTURAL SOPHISTICATION WITH PRACTICAL BENEFITS

Architectural sophistication with practical benefits.

Using Bolon flooring in multi-family residential interiors is a superior alternative to other wall-to-wall carpeting and hard floors. The flooring has a tactile woven expression that adds softness and an exclusive character to any room, from entrance to apartments.

Our floors are durable, safe and easy to care for. Bolon flooring is approved by The Norwegian Asthma and Allergy Association (NAAF) for its ease of cleaning, impervious benefits and clean air qualities. With Bolon, you can enjoy a designer touch in your multi-residential project without compromising on everyday practical benefits.

Durability

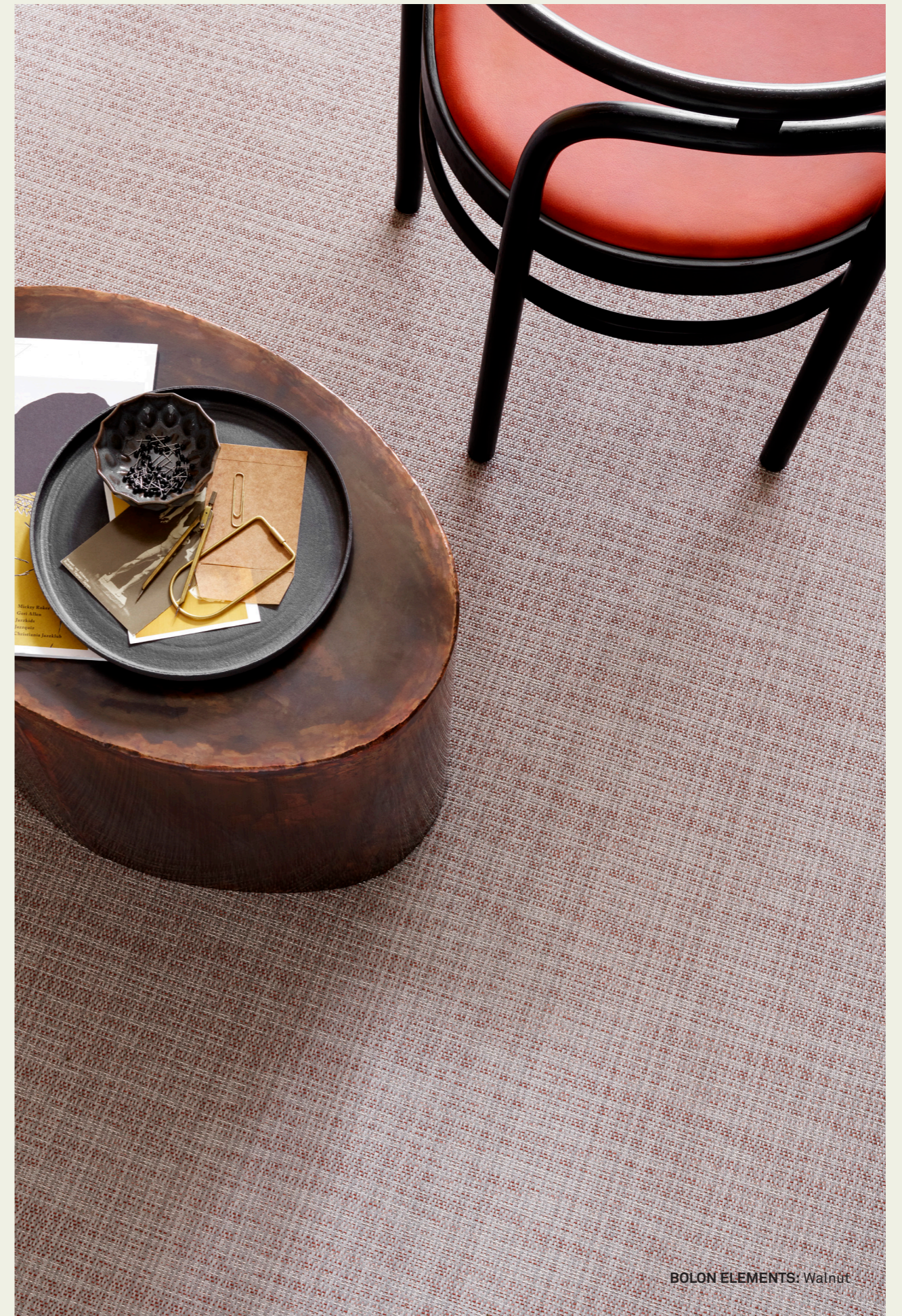
DURABLE - DESIGNED TO LAST

Smart, smarter, Bolon. Choosing Bolon flooring is a great investment as our floors have a long product lifetime with warranties up to 15 years. Our competitive durability properties, ease of maintenance and successful track record with residential projects, ensures a safe and sound investment.

The benefits of Bolon correspond with the long-term benefits for Multi Family Residences. Unlike textile, carpet or hard alternatives, our flooring offers superior appearance retention without flattening or colours fading also making it a more sustainable choice.

CHARACTERISTIC	BOLON	CARPET	RESILIENT VINYL, LINO, RUBBER	HARD WOOD	CONCRETE, STONE, CERAMIC
Return on Investment	●	●	●	●	●
Appearance retention over time	●	●	●	●	●
Textile appearance	●	●	●	—	—
Comfort under foot	●	●	●	—	—
Impact sound reduction	●	●	●	●	●
Able to be disinfected	●	●	●	●	●
Slip resistance	●	●	●	●	●
Impervious material	●	—	●	—	●
Antistatic properties	●	●	●	●	●
Hypoallergenic properties	●	—	●	●	●
Ease of rolling loads	●	●	●	●	●
Minimal chemical maintenance	●	●	●	●	●

● HIGH ● LOW — NOT APPLICABLE



BOLON ELEMENTS: Walnut

Cleanability

LOW MAINTENANCE & CLEANING

Low maintenance and ease of cleaning is a must in residential interiors but perhaps even more important in multi-use residences. Most cleaning can be accomplished with a vacuum cleaner, brush and 99% of the time Bolon can be cleaned using just water. For daily cleaning, we recommend vacuuming.

A Bolon floor that has become extremely dirty or a badly maintained floor, can in most cases still be restored to an almost new condition by using an appropriate roller brush or orbital cleaning machines. However, correctly performed regular maintenance prolongs the floor's useful life.



Acoustic Flooring

A SWEET SOUND OF SILENCE WITH OUR ACOUSTIC BACKING

Sound insulation is an essential feature in highly trafficked buildings with reduced sound transmission contributing to improved living conditions for tenants. Bolon acoustic flooring reduces impact sounds up to 22 dB. Our floors also absorb 15% of airborne sounds and as the insulation layer is soft to walk on, we combine practicality and design. 100% of all BOLON collections contain recycled pre-consumer waste. With the sound insulation layer, we add 90% recycled polyester fibres from post-consumer waste originating from PET-bottles making our acoustic flooring a perfect choice for spaces such as busy lobbies, corridors, and other high foot traffic areas where sound disturbance could be an issue.

WHO (World Health Organisation) "excessive noise seriously harms health and interferes with daily activities. Getting the acoustic comfort right in PRS is paramount."



Sustainability & Wellness

SUSTAINABILITY AS STANDARD

Bolon was founded thanks to sustainable innovation, where vinyl offcuts were used to weave rag rugs. And, ever since, sustainability has played an integral role in everything we do. Using Best Environmental Practice suppliers of PVC and having climate neutral manufacturing makes Bolon flooring a sustainable choice. We recycle our own, and even others, production waste at our integrated recycling plant. By re-using the waste material from new flooring production, our end product is resource-efficient; it is also free from hazardous chemicals contributing to a lower environmental impact.

Furthermore, we are proud that all of Bolons collection are certified for low emissions and good indoor air quality.

WHO HEALTH & WELLBEING – “on average we spend 90% of our time indoors. 65% at home what we put into our homes has a direct impact on our health and wellbeing.” (LRV – Indoor air quality Low VOC) anti allergens (house dust mites) Well Building standard.





ENTRANCE & LOBBY - HARDWEARING

Bolon flooring is recommended for high traffic areas, such as entrances and lobbies as it is both durable and easy to clean. Without having to compromise on design, Bolon floors allow you to create eye catching and durable entrance flooring.



BOLON STUDIO TRIANGLE, ETHNIC: Gabna, Abisko

CORRIDORS

The acoustic comfort of Bolon is perfect for busy, noisy corridors with heavy foot traffic, reducing impact sound.

COMMUNAL AREAS - LIVING SPACES/LOUNGE

Bolon Area Rugs add woven sophistication to any space or interior with its unique tactile expression along with the benefits of woven vinyl flooring, durability, ease of maintenance and sustainability ensuring a long term investment. Our area rugs are produced on demand using a non-stitching technique developed by Bolon with a tailor-made finished edge, available in sizes up to 4 x 8 m.



BOLON RUG: GRAPHIC: Herringbone Black



OUTDOOR COMMUNAL AREAS, GYMS AND LIBRARIES

Communal areas such as gyms and libraries demand flexible and sophisticated flooring solutions. With Bolon, you can create designs that are unique, functional and long-lasting for both soothing environments or high energy spaces.



BOLON STUDIOSCALE: NOW: Silver / ELEMENTS: Flint / ETHNIC: Kaise

BEDROOMS/APARTMENTS

Bolon is a great choice inside apartments, our floors will improve the tenant's well-being. The floors are as soft to walk on as they are easy to clean and with our acoustic backing reduced noise will add to the overall ambiance and wellness in the building. We offer comfortable floors that add both warmth and style.



Case study

ST ANNES HOUSE

- CONVERSATION WITH SUSIE RUMBOLD, TESSUTO

Can you give us a brief overview of St Annes house?

St Anne House was a shabby, 14 story, redundant office building in the centre of Croydon opposite the Whitgift shopping centre. It was redeveloped by our clients "The Quarters", leading PRS provider, into studio apartments as part of the Croydon redevelopment plan. The Quarters own and operate several similar buildings in London and We have worked on all of them over a period of nearly 10 years.

What was the project brief?

The lower 7 floors were to be converted into 198 Studio apartments with 42 one and two bedroom flats on the upper 7 floors. The flats were to be sold and the studios were to be retained by the clients for use as short-term rental units. The studios are aimed at young aspirational people moving to London to take that all important first job, and are affordable, comfortable and smart.

Where did you get your inspiration?

We took our primary inspiration from our target user. We figured that they would choose to live closer to the centre of town if they could afford to so we gave them the London Dream by using photographic images of the skyline and the city's most iconic landmarks. We took further inspiration from Croydon's position as a transport hub and the home of the original London international airport.

Did you face any challenges? if so how did you overcome these?

Our main challenge was working with the existing building shell and particularly the position of the windows. The planners insisted on preserving the existing pattern of fenestration which made it very difficult to divide up the space evenly as we always ended up with a window just where we didn't want one.

The other challenge was in meeting the client's brief for the longevity of the fitout. They wanted to finishes and FF&E in the studios to have a commercial life of 10 years, so everything we specified had to be bomb proof. We would produce samples in sign-off meetings and the clients would immediately get their car keys out to see if they could scratch holes in what we were showing them it was quite a challenge!

What was your highlight?

There were two highlights for me both in the reception area. We commissioned a local artist to produce a beautiful panoramic pen and ink drawing of the London Skyline which we had resized and digitally printed to form a striking mural, and we also commissioned a traditional brass and glass 4-faced station clock to hang in the centre of the space over the main seating area.

What role did Bolon play at St Annes House?

Bolon was key to us fulfilling the client's brief for longevity of finishes on the project. We specified Bolon for all the communal corridors, the lift lobbies and the lift floors for its stylish looks and hard-wearing properties. In the lift cars we really appreciated the lightweight nature of the material. We also benefited from Bolon's acoustic properties in effectively damping down noise in the long corridors.

Would you recommend Bolon, use Bolon again? How was your experience working with Bolon?

I wouldn't hesitate to use Bolon again. The company are great to work with and super responsive when it comes to sampling and technical information. Its great for high traffic areas and never seems to flatten or get tired looking.

How did Bolon help you achieve/ create your desired scheme/ project?

Bolon were definitely a key component of the look we achieved for the common parts at St Anne House. The schemes in these areas had to be quite simple so that they could be easily maintained. With so many short stay tenants moving in and out all the time the walls are being constantly touched up, so we used Bolon to provide the main visual interest in terms of colour and texture.

At Bolon we are constantly improving our products to be more sustainable. What do you think lies in the future regarding sustainable materials within residential builds?

With the recent UK "Interior Design Declares" sustainability declaration, all designers are being strongly encouraged to interrogate their supply chains and specify materials more thoughtfully. 27% of our UK carbon emissions come from our residential buildings, so it is imperative that we all specify sustainably starting right now if we are to have any chance of meeting our 2030 net zero emissions target. Bolon have always been in the vanguard of the drive towards sustainability, with their recycling program so its good to know they are still working hard to improve their products still further.

Photography - Jon Bond



Certificates

PROOF OF PERFORMANCE

Our products and processes have been awarded stringent environmental certifications for buildings including GreenTag, BREEAM and Floorscore, which contribute to a higher LEED rating. These third-party verified certifications are one way of demonstrating and communicating our environmental quality. Our declarations provide transparency and availability for everyone. Because Bolon operates in many different markets, we have many different certificates and declarations.

[Click here](#) to read more about our certificates.



FAQ

IS THE FLOORING ACOUSTIC?

Our flooring's impact sound absorption varies for different products from 11dB to 17dB. With the acoustic felt option the sound absorption is up to 22dB. Make sure to read the designated product specification.

WHAT IS THE FIRE RATING OF YOUR FLOORING?

Bolon flooring complies with the requirements in the European, standard En 13501-1, fire classification of construction products, and has achieved the rating just below non-combustible material. This classification is called BflS1 and includes both fire and smoke production. Bolon flooring is approved for emergency exit routes in some countries.

IS THE FLOORING SLIP RESISTANT?

CE certification for the floor includes a slip resistance assessment. The lowest value for materials used in public areas is 0.3. Bolon's collections have a slip resistance value of >0.5

HOW DO YOU CLEAN BOLON?

Bolon flooring is simple to take care of. For daily cleaning, we recommend vacuuming– with a vacuum cleaner, scrubbing brush and stain remover, 99% of all cleaning needs can be accomplished for long lasting appearance retention. Please get in contact to learn more about cleaning Bolon.

DO YOU PROVIDE WARRANTY CERTIFICATES FOR YOUR FLOORING?

Bolon flooring warranty is between 10-15 years depending on the product.

CAN BOLON FLOORING BE INSTALLED ON CHIPBOARD, PLYWOOD AND CONCRETE, PORCELAIN AND CERAMIC FLOORING?

Yes. It is important to ensure a levelled subfloor for a good result. Make sure that the adhesive used is compatible with vinyl and the subfloor. See our installation guidelines for more information.

IS BOLON FLOORING HEALTHY AND SAFE?

Yes. Our floors are free from additives such as phthalates or heavy metals. The PVC used comes from environmentally certified factories that have low emissions and efficient energy use. Moreover, Bolon has VOC (Volatile Organic Compound) emissions well below recommended levels and are featured in various hospitals and healthcare practices around the world. All collections are recommended by The Norwegian Asthma and Allergy Association (NAAF).

IS BOLON PET-FRIENDLY?

Yes. Bolon flooring is pet friendly and mess can easily be cleaned via vacuuming or mopping. Please refer to cleaning instructions.

HOW SUSTAINABLE IS BOLON FLOORING?

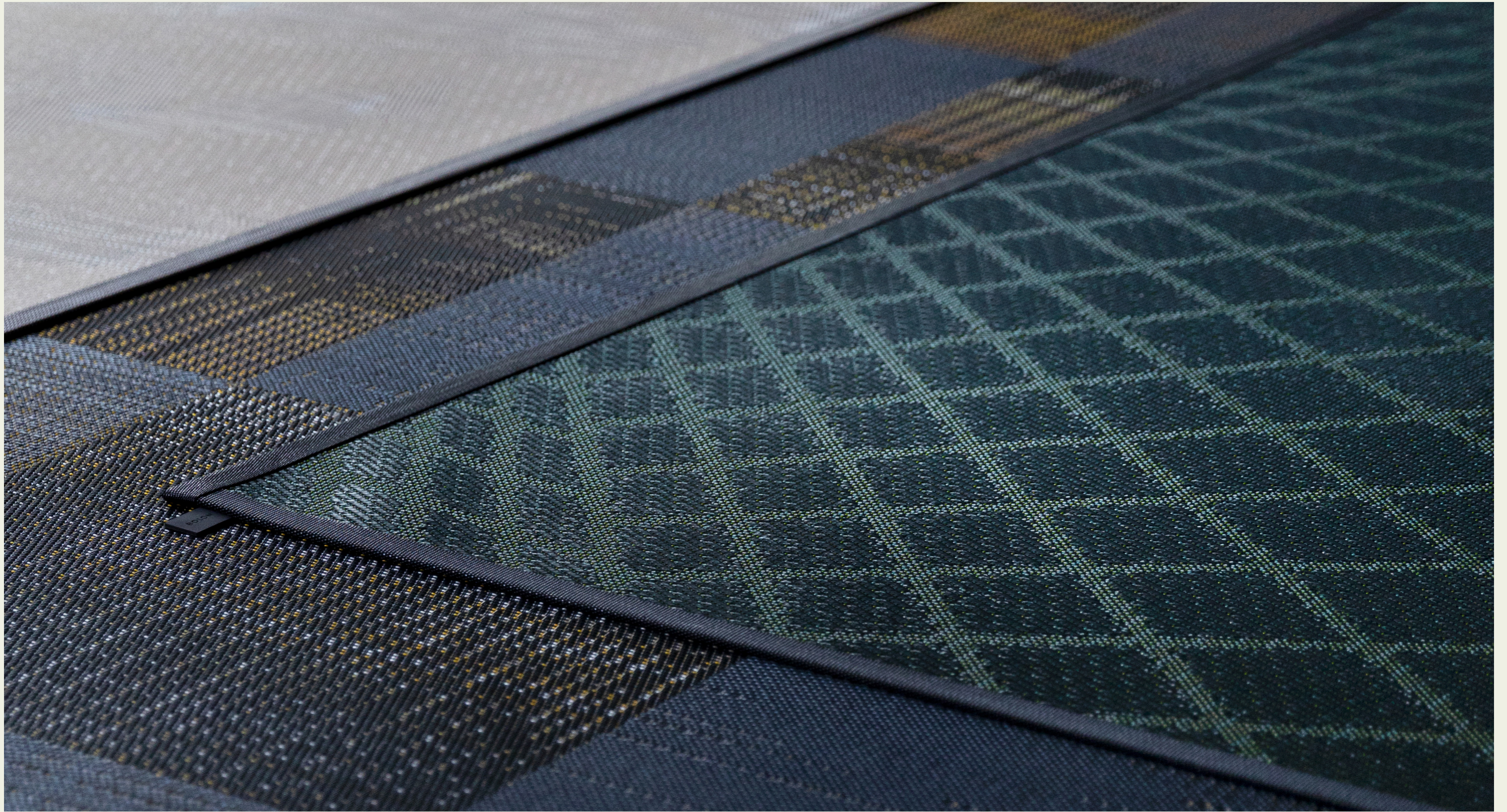
Our entire production, from design to finished floors, takes place in Ulricehamn, Sweden. This means reduced transport emissions and the 100% use of renewable energy in the manufacturing. Our climate footprint for production and our offices is therefore zero. Moreover, we have installed a new recycling plant, which reduces the carbon footprint of the actual raw material. Each tonne of recycled material is one step closer to climate neutral flooring.

IS BOLON RECYCLABLE?

Yes, Bolon is 100% recyclable. Our raw material, PVC, can be recycled up to seven times and it is completely free of additives such as phthalates or heavy metals. Our floors have low emission values and are, therefore, even approved for hospital environments.

WHICH PRODUCTS CONTAIN RECYCLED MATERIAL?

All of our collections contain recycled materials. The proportion of recycled material varies up to 30% of the total material used.



For more information please reach out to
sales@flooring-concepts.co.uk

BOLON