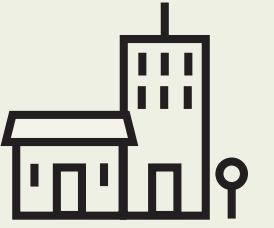


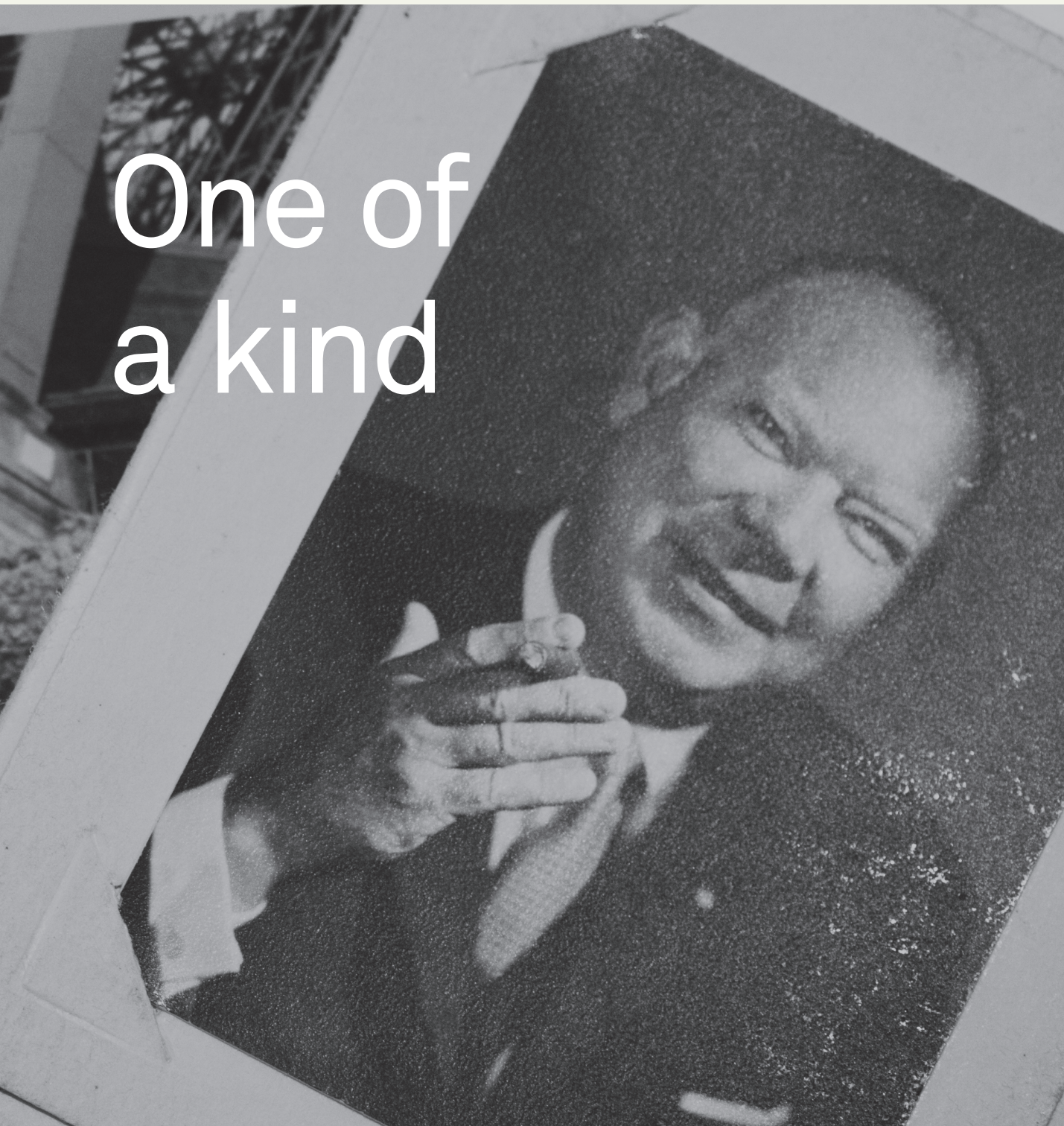
# RESIDENTIAL PROJECTS

Be inspired by projects from all over the world and explore how others have used our floorings to create spaces to thrive in.



# BOLON





# One of a kind

## STOCKHOLM, SWEDEN – 1949

A young man called Nils-Erik Eklund had the foresight and business acumen to see a great opportunity in the piles of textile waste being produced at a neighbouring factory. From this waste, rag rugs were produced – and three generations and countless exciting twists and turns later, Bolon is a flooring solution that meets the exacting demands of retail businesses the world over.



## ULRICEHAMN, SWEDEN – 2020

Bolon is an internationally acclaimed manufacturer of superior quality woven vinyl flooring. We draw our influences from the world of fashion, designing and producing unique woven floors for creative and inspiring environments. Our clients include international brands and we collaborate with world-famous designers and architects. Whilst this gives us immense satisfaction, we are equally proud to offer a

product that represents a pragmatic, functional and environmentally considerate choice for commercial premises of every type and size.

So welcome to our world – a world where innovation, borderless creativity and focused practicality combine to offer you flooring that is truly one of a kind.





BOLON STUDIO TRIANGLE: SILENCE: Emotion / NOW: Champagne, Titanium / ETHNIC: Gabna

- 03 THE STORY
- 07 INTRO
- 13 RUGS
- 15 DESIGNABILITY
- 21 CLEANABILITY
- 25 DURABILITY
- 29 ACOUSTIC FLOORING
- 31 SUSTAINABILITY
- 35 REFERENCES
- 45 CERTIFICATES / FAQ's
- 47 CONTACT





BOLON SILENCE: Balance

## ARCHITECTURAL SOPHISTICATION WITH PRACTICAL BENEFITS

Using Bolon flooring in residential interiors is an excellent alternative to carpets. The flooring has a tactile woven expression that adds softness and an exclusive character to any room. It is also durable, safe and easy to care for. In fact, Bolon flooring is approved by The Norwegian Asthma and Allergy Association (NAAF) for its ease of cleaning and impervious benefits. With Bolon, you can enjoy a designer touch in your residential project without compromising on everyday practical benefits.



## WHY BOLON IS A BETTER CHOICE

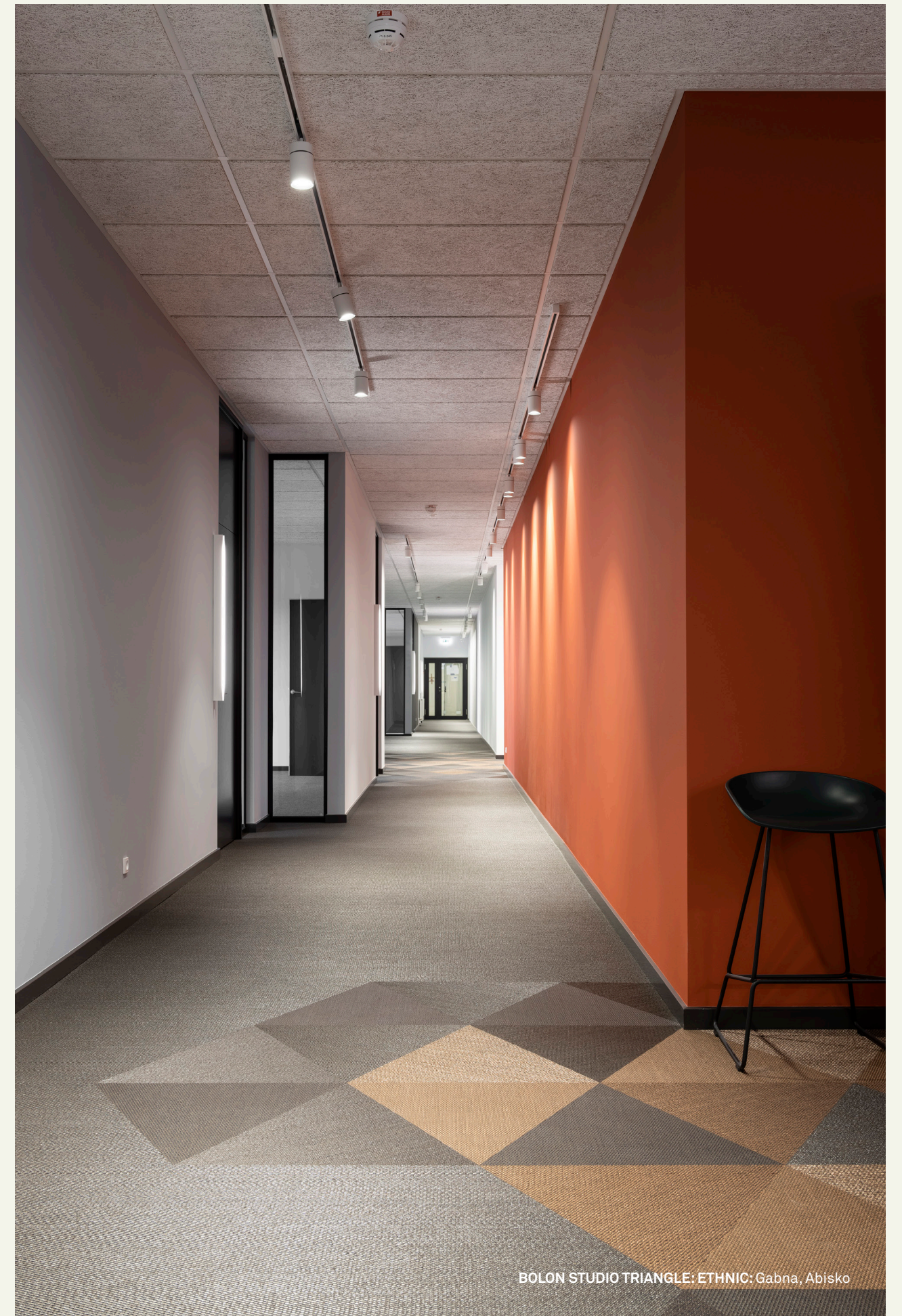
CHARACTERISTIC	BOLON	CARPET	RESILIENT VINYL, LINO, RUBBER	HARD WOOD	CONCRETE, STONE, CERAMIC
Return on Investment <sup>1</sup>	●	●	●	●	●
Appearance retention over time <sup>2</sup>	●	●	●	●	●
Extensive product lifespan	●	●	●	●	●
Textile appearance	●	●	●	—	—
Comfort under foot	●	●	●	—	—
Impact sound reduction	●	●	●	●	●
Slip resistance	●	●	●	●	●
Impervious material	●	—	●	—	●
Antistatic properties	●	●	●	●	●
Hypoallergenic properties	●	—	●	●	●
Minimal chemical maintenance <sup>3</sup>	●	●	●	●	●

● HIGH ● LOW — NOT APPLICABLE

<sup>1</sup> Competitive durability properties, superior quality, and easy cleaning and maintenance allow for a high return of your initial investment.

<sup>2</sup> Unlike textile, carpet or hardwood, our flooring retains its appearance without flattening.

<sup>3</sup> Cleaning can be accomplished with a vacuum cleaner, water, or a minimal dose of cleaning agent.



BOLON STUDIO TRIANGLE: ETHNIC: Gabna, Abisko

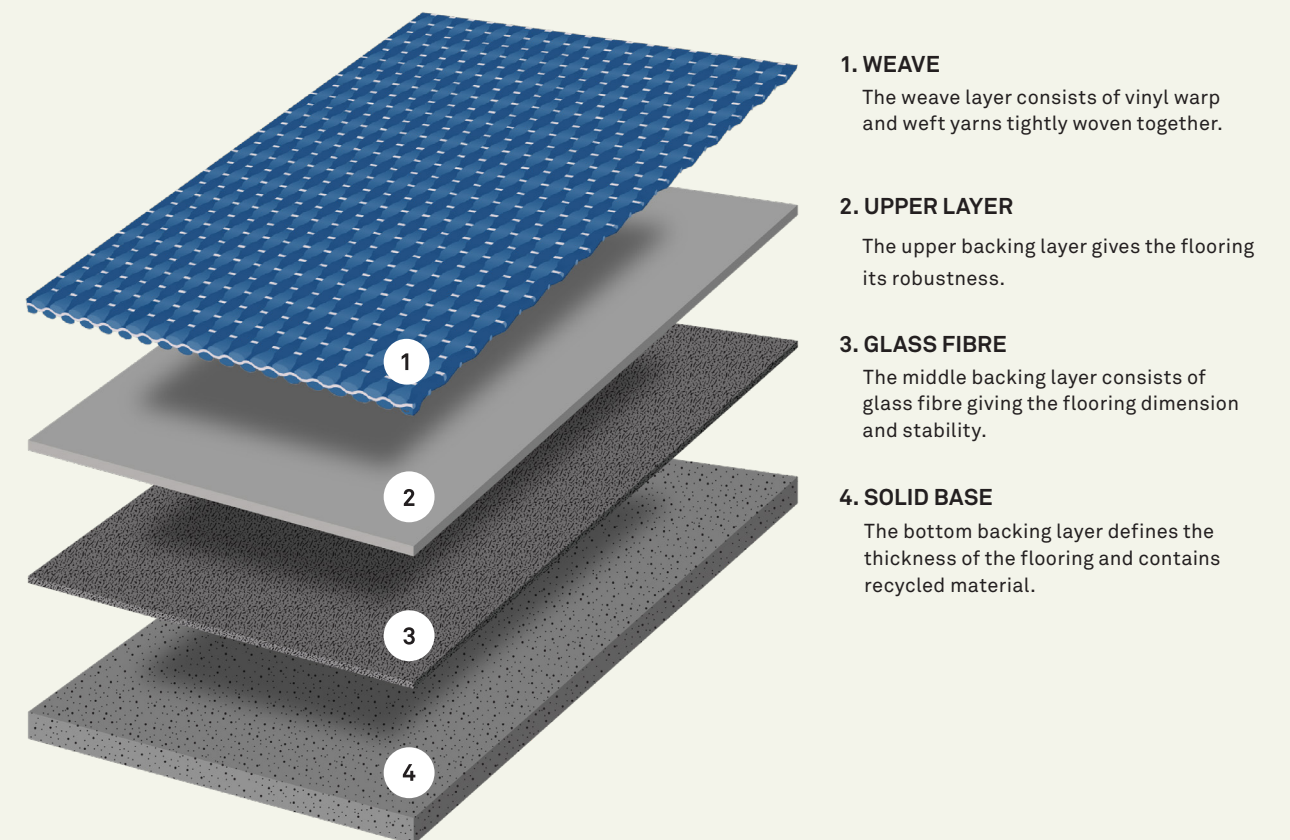




BOLON: Customised

## A CLOSER LOOK OF OUR PRODUCT

Bolon flooring is composed of four layers, one weave and three backing, giving the product its unique qualities. The weave layer is formed by vinyl warp and weft threads tightly woven together. The variations of the warp and weft yarn together with the different weaving techniques gives Bolon flooring its vast design alternatives.



### 1. WEAVE

The weave layer consists of vinyl warp and weft yarns tightly woven together.

### 2. UPPER LAYER

The upper backing layer gives the flooring its robustness.

### 3. GLASS FIBRE

The middle backing layer consists of glass fibre giving the flooring dimension and stability.

### 4. SOLID BASE

The bottom backing layer defines the thickness of the flooring and contains recycled material.



# Rugs

## VERSATILITY OF A BOLON RUG

Combines the technical and practical aspects of Bolon flooring with the flexibility of a rug.

- › Bespoke and made-to-measure
- › Personalised design
- › Eight woven vinyl trimming options
- › Over 100 original articles to choose from
- › Personalisation with standard specials
- › With nearly endless design possibilities, a Bolon Rug is an excellent choice for your home, shops, hotels and offices

Get in touch for personalisation:  
[info@bolon.com](mailto:info@bolon.com)



BOLON RUG - GRAPHIC: Herringbone Black



# Designability

## DESIGN FLEXIBILITY

Commercial premises demand tough yet flexible and sophisticated flooring solutions. With Bolon, you can create designs that are both unique, functional and long-lasting.

Creating an interior with Bolon flooring as a foundation gives you the freedom to play with shapes, colours, and patterns. Choose from existing collections or customise your own design with the Bolon by You-tool. The flooring is supplied in rolls, 50x50 cm tiles, planks or as Bolon Studio™-tiles. Our collections and design tools are divided into:

- › Original collections – all our collections are designed to last and bring beauty to any interior. Pick your favourite.
- › Tile design tool – visually combine tiles with designs in our online tool.
- › Bolon by You – create a unique and personalized flooring design with a simple online tool.
- › Collaborative collections – we team up with some of the world's most renowned designers to keep pushing the boundaries of flooring design.
- › Customised flooring – we're more than happy to help you create your project-specific flooring.

## A UNIQUE VISUAL EXPERIENCE

- › **HIGH-END DESIGN** – every collection is a visual, sensual treat. Our designs add character and ambience to any area of a commercial interior.
- › **LIVING DESIGN** – the reflective qualities of our flooring and its ability to play with light and create 3D effects and structure add a unique design dynamic.
- › **FLEXIBILITY** – Bolon flooring can be designed in many colours, shapes and patterns. The only boundaries are your imagination.
- › **WOVEN STRUCTURE** – the unique vinyl weave provides a tactile woven touch with great durability qualities.



BOLON SILENCE: Balance



## CUSTOMISATION FOR YOUR PROJECT

Sometimes, an interior project demands unique design to deliver that final touch making all the difference. We're more than happy to help you create that project specific flooring. Feel free to contact us with your idea and let us become a part of your creative process. The design possibilities are nearly endless.

For more information, please contact:  
[info@bolon.com](mailto:info@bolon.com)



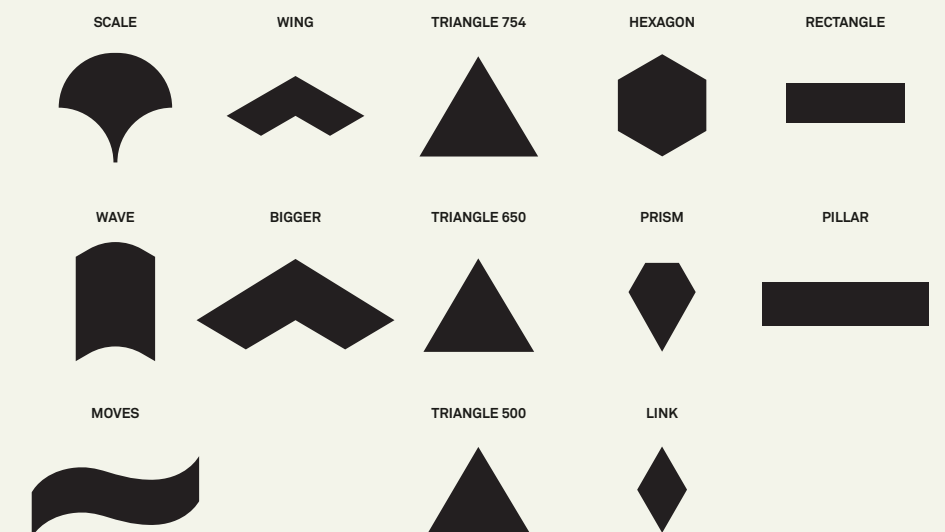




BOLON STUDIO SCALE: NOW: Silver / ELEMENTS: Flint / ETHNIC: Käise

## BOLON STUDIO™ CREATIVITY ON YOUR TERMS

Commercial premises can be transformed by creative, inspiring interiors. Our Bolon Studio™ concept makes it easier than ever to achieve this. With Bolon Studio™, you can explore different sizes and shapes to let creativity truly express itself. Consider colour choice, room characteristics and how the light falls – and discover how Bolon flooring adds unique ambience and character to your interior.





# Cleanability

## RIGHT FLOORING FOR THE RIGHT PLACE

Bolon flooring can be used in most areas of an interior design, as it is both durable and easy to clean. However, an efficient entry system will save your floor from 85% of all incoming dirt. Moreover, you should choose the colour of the flooring with care. Start by considering the function and the overall surroundings of the space where you plan to use Bolon flooring. If you need assistance, we are more than happy to guide you.

## EASY TO CLEAN EASY TO USE

In any commercial interior project, cleaning and maintenance of flooring is always an issue. With Bolon flooring, most cleaning needs can be accomplished with a vacuum cleaner, scrubbing brush, water and a minimal dose of stain remover. A badly maintained floor, or a floor that has become extremely dirty for another reason, can in most cases be restored to an almost new condition. We called this method zeroing.

Correctly performed maintenance prolongs the floor's useful life. Factors such as colour, design or where the flooring is installed affect the need for cleaning. Mechanical cleaning can be performed with appropriate roller brush or orbital cleaning machines. For daily cleaning, we recommend vacuuming.



Vacuum cleaner



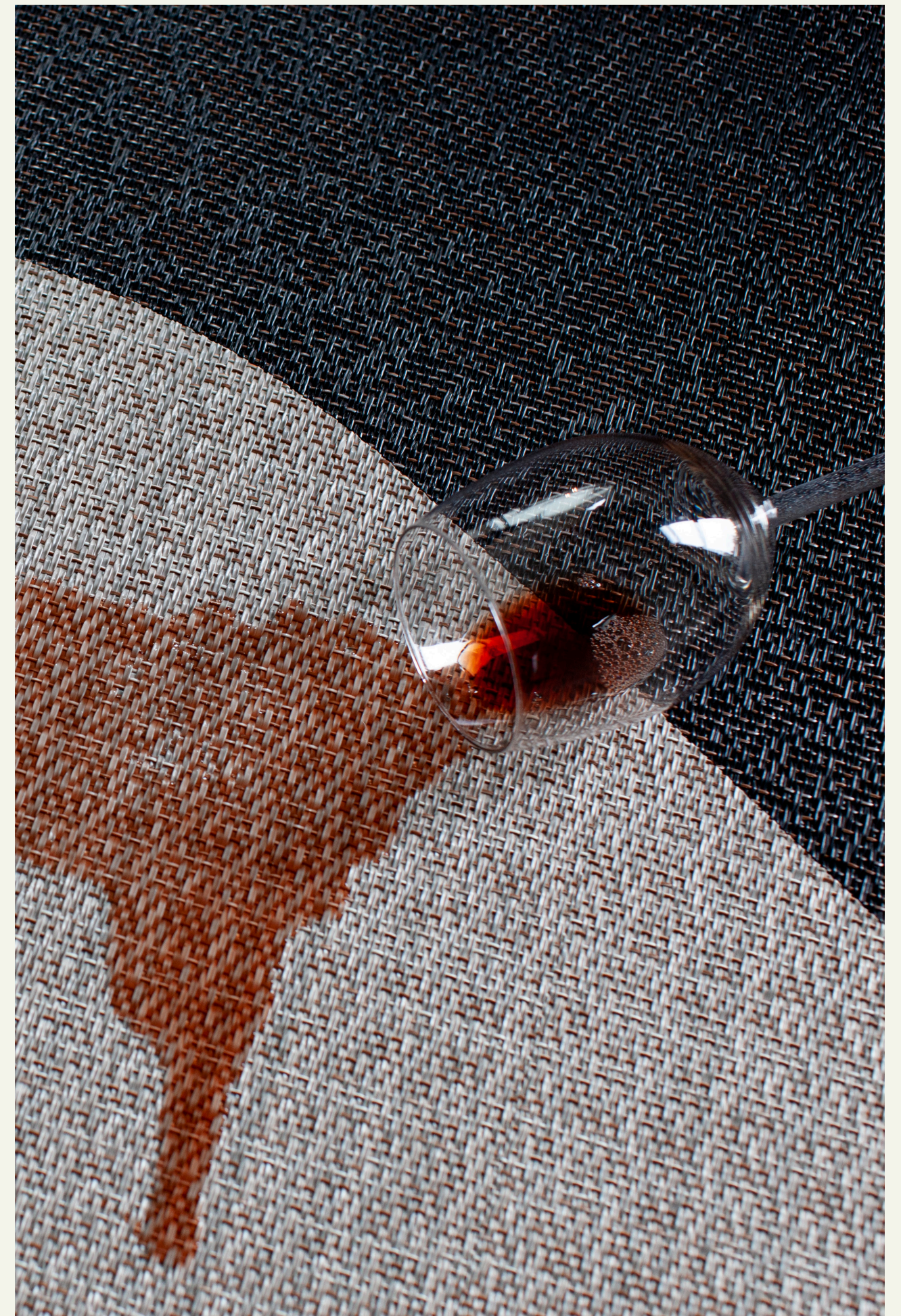
Stain remover



Water



Scrubbing brush







## STAIN REMOVAL

STAIN	CLEAN WITH
Chocolate, fat, cheese	Melt with hot water (70-100°C). Soak up with a micro-fibre cloth
Juice, coffee, beer, wine	Hot water, if needed use an all-purpose cleaner
Asphalt, oil, shoe cream, chalk, ink	Chemically pure petrol
Blood	Cold water – ammonia if needed
Rust	Light acidic (pH 3-4) cleaner
Water-based glue	Hot water
Solvent-based glue	Chemically pure petrol
Marks from shoes	Rub with dry cloth
Chewing gum	"I-gum" machine if available. Hot water (70-100°C), steam or freeze spray
Indentation from furniture	Hot water (70-100°C)
Urine	Hot water, if needed use an all-purpose cleaner

## PRACTICAL ADVANTAGES

- > EASY TO CLEAN** - the vast majority of cleaning tasks can be accomplished with a vacuum cleaner, water, scrubbing brush and a minimal dose of cleaning agent.
- > HYGIENIC** - Our flooring is impervious to any spill or mess which makes them easy to clean and maintain.
- > BETTER INDOOR AIR QUALITY** - Bolon has VOC (Volatile Organic Compound) emissions well below recommended levels.



“Great flooring design is a delicate mix of beauty and function.”

– Marie Eklund  
Owner and CEO of Bolon





# Durability

## A SMARTER INVESTMENT

Bolon flooring has a long product lifetime during which we offer warranties up to 15 years. And with its competitive durability properties, superior quality, and easy cleaning and maintenance routines it ensures for a high return of your initial investment.

## LONG TERM BENEFITS

- > **DURABILITY** – all our collections have ISO 10874 durability class 32 or 33, which ensures for a long product life.
- > **WARRANTY** – all our flooring collections comes with 10 – or 15- years warranty.
- > **APPEARANCE RETENTION** – unlike textile, carpet or hardwood, our flooring retains its appearance without flattening.
- > **KNOWLEDGE & EXPERIENCE** – our unique background and product together with our position as a world leader in woven design flooring make Bolon flooring a safe and sound investment.





# Acoustic Flooring

## DESIGNING WITH ACOUSTIC FLOORING

Sound insulation is an essential feature in a building as it reduces the transmission of sound disturbances to the room below. The thicker insulation layer improves the impact noise reduction up to 22 dB. This flooring enhancement is a perfect choice for spaces such as offices, busy lobbies, corridors, or other high foot traffic areas.

## SILENCE WITHOUT COMPROMISE

- > **IMPACT NOISE REDUCTION** – reduced sound level to the room below is 21-22 dB.
- > **AIRBORNE SOUND ABSORPTION** – the flooring absorbs 15% of the sound energy.
- > **GREAT PERFORMANCE** – the sound insulation layer doesn't affect the flooring's performative qualities such as fire rating, durability or warranty.
- > **THICKER FLOORING** – the insulation layer makes the flooring thicker (5 mm) matching other flooring types.
- > **SOFTER** – another great benefit of acoustic Bolon flooring is that it makes it softer and more comfortable to walk on.

### 1. WEAVE

The weave layer consists of vinyl warp and weft yarns tightly woven together.

### 2. UPPER LAYER

The upper backing layer gives the flooring its robustness.

### 3. GLASS FIBRE

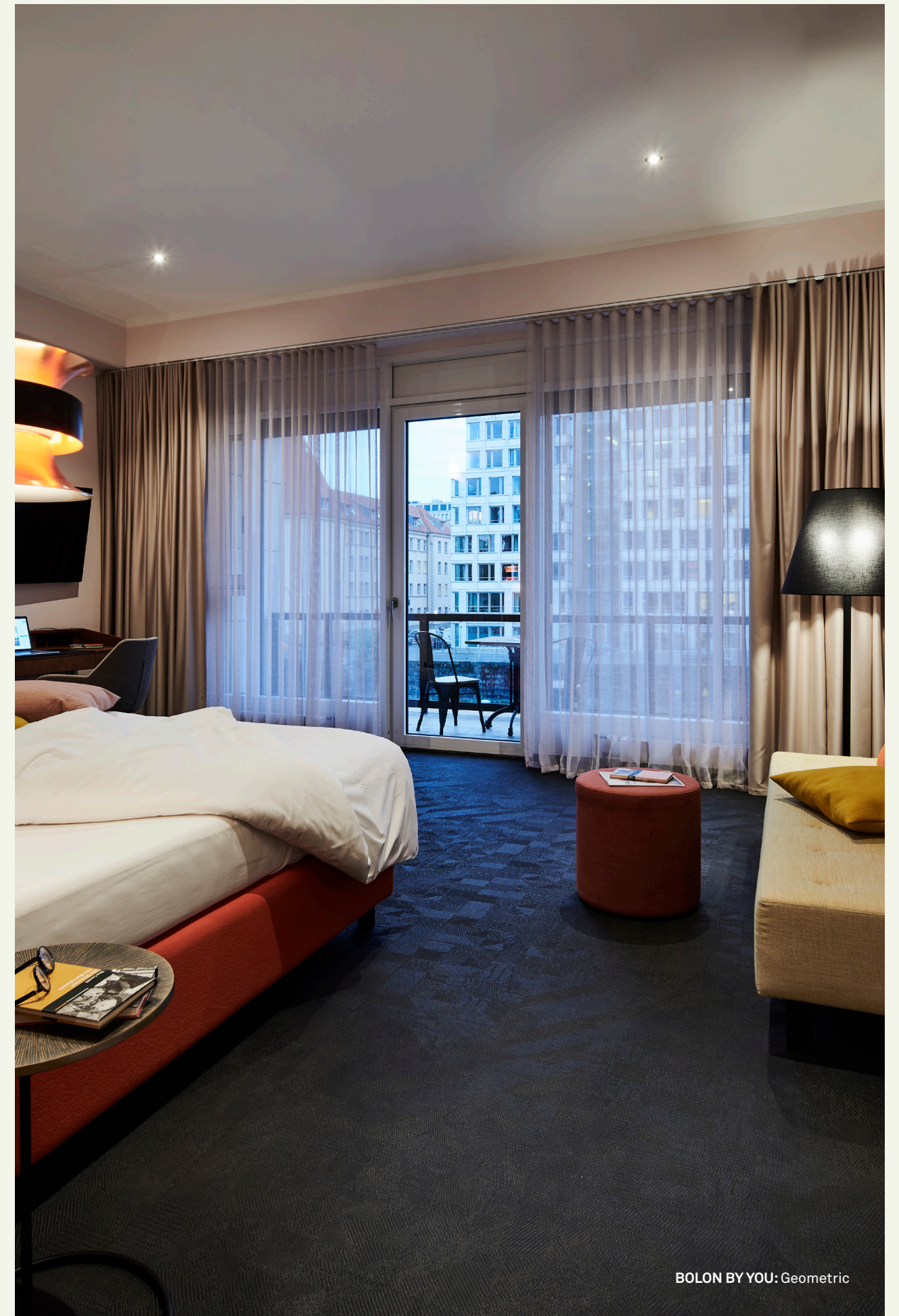
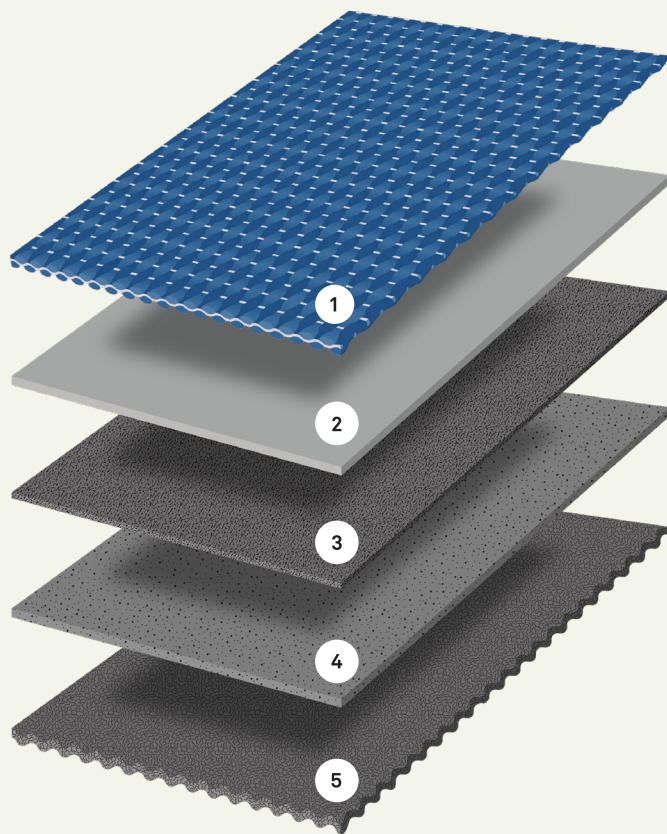
The middle backing layer consists of glass fibre giving the flooring dimension and stability.

### 4. SOLID BASE

The bottom backing layer defines the thickness of the flooring and contains recycled material.

### 5. SOUND INSULATION LAYER

The sound insulation layer consists of a felt material, containing recycled PET bottles, that helps to reduce the impact of sound and noise.





# Sustainability

## SUSTAINABILITY AS STANDARD

A Bolon flooring is a sustainable choice considering its long product lifetime, outstanding durability properties, Eco-friendly cleaning, and the climate neutral manufacturing in Ulricehamn Sweden. Moreover, the PVC used in the flooring is solely bought from Best Environmental Practice suppliers.

We also recycle our own, and even others, production waste at our integrated recycling plant. And by re-using the material producing new flooring, our end product is resource-efficient with a lower environmental impact.

## ENVIRONMENTAL PERFORMANCE OF BOLON FLOORING

- › **RECYCLED WASTE** - All collections contain recycled material from pre-consumer waste.
- › **RENEWABLE ENERGY** - We use 100% renewable energy in our factory.
- › **BEST PRACTICE PVC** - We only use best practice PVC and source raw material from the greenest polymer factories.
- › **PHthalate FREE** - All our products are 100% phthalate free.
- › **INTEGRATED RECYCLING** - Our recycling plant is integrated with our factory.
- › **CLEAN MAINTENANCE** - Cleaning can in, most cases, be performed with just water.
- › **GREEN TRANSPORT** - We primarily work with local suppliers which reduces transport-related environmental impact.



BOLON ELEMENTS: Ash





“Playing with the direction of the flooring creates a beautiful visual effect.”

–Mikael Bergman  
RealEstelligence





# Common Area





# Dressing Room



BOLON STUDIO SCALE: NOW: Copper, Champagne, Anthracite, Silver, Brass



# Corridor



BOLON STUDIO TRIANGLE: ETHNIC: Abisko, Gabna



# Dining Area



BOLON ARTISAN: Slate, Quartz / BOTANIC: Sage



# Gym





# Certificates

## PROOF OF PERFORMANCE

Our products and processes have been awarded stringent environmental certifications for buildings including GreenTag, BREEAM and Floorscore, which contribute to a higher LEED rating. These third-party verified certifications are one way of demonstrating and communicating our environmental quality. Our declarations provide transparency and availability for everyone. Because Bolon operates in many different markets, we have many different certificates and declarations.

[Click here](#) to read more about our certificates.



# FAQ

## TECHNICAL PERFORMANCE

### IS THE FLOORING ACOUSTIC?

Our flooring's impact sound absorption varies for different products from 11dB to 17dB. With the acoustic felt option the sound absorption is up to 22dB. Make sure to read the designated product specification.

### WHAT IS THE FIRE RATING OF YOUR FLOORING?

Bolon flooring complies with the requirements in the European, standard En 13501-1, fire classification of construction products, and has achieved the rating just below non-combustible material. This classification is called BflS1 and includes both fire and smoke production. Bolon flooring is approved for emergency exit routes in Sweden.

### WHAT IS THE FLOORING'S SLIP RESISTANCE ASSESSMENT?

CE certification for the floor includes a slip resistance assessment. The lowest value for materials used in public areas is 0,3. Bolon's collections have a slip resistance value of >0.5

### IS BOLON FLOORING ANTI-STATIC?

Bolon flooring does not generate a static charge but it cannot be classified as an electrostatic dissipating floor. Bolon flooring has been tested and fulfill the requirements of the European Directive EN 1815.

## INSTALLATION

### CAN BOLON FLOORING BE INSTALLED ON CHIPBOARD, PLYWOOD AND CONCRETE, PORCELAIN AND CERAMIC FLOORING?

Yes. It is important with a leveled subfloor for a good result. Make sure that the adhesive used is compatible with vinyl and the subfloor.

### CAN I USE BOLON FLOORING ON RAISED FLOORS?

Yes. Especially our tiles work excellent for raised floors. For more information contact your local partner.

## HEALTH AND WELLNESS

### IS BOLON FLOORING HEALTHY AND SAFE?

Yes. Our floors are free from additives such as phthalates or heavy metals. The PVC used comes from environmentally certified factories that have low emissions and efficient energy use. Moreover, our floors have low emission values of VOC and are featured in various hospitals and healthcare practices around the world. All collections are recommended by The Norwegian Asthma and Allergy Association (NAAF).

## SUSTAINABILITY

### DO YOU CALCULATE THE FLOORING'S ENVIRONMENTAL IMPACT ACROSS THE WHOLE LIFE-CYCLE?

Yes, we have performed so-called EPD's, life cycle analyses, on all our collections. The analyses made it clear that the biggest climate impact comes from the production of the vinyl raw material. We will reduce this climate impact in the coming years.

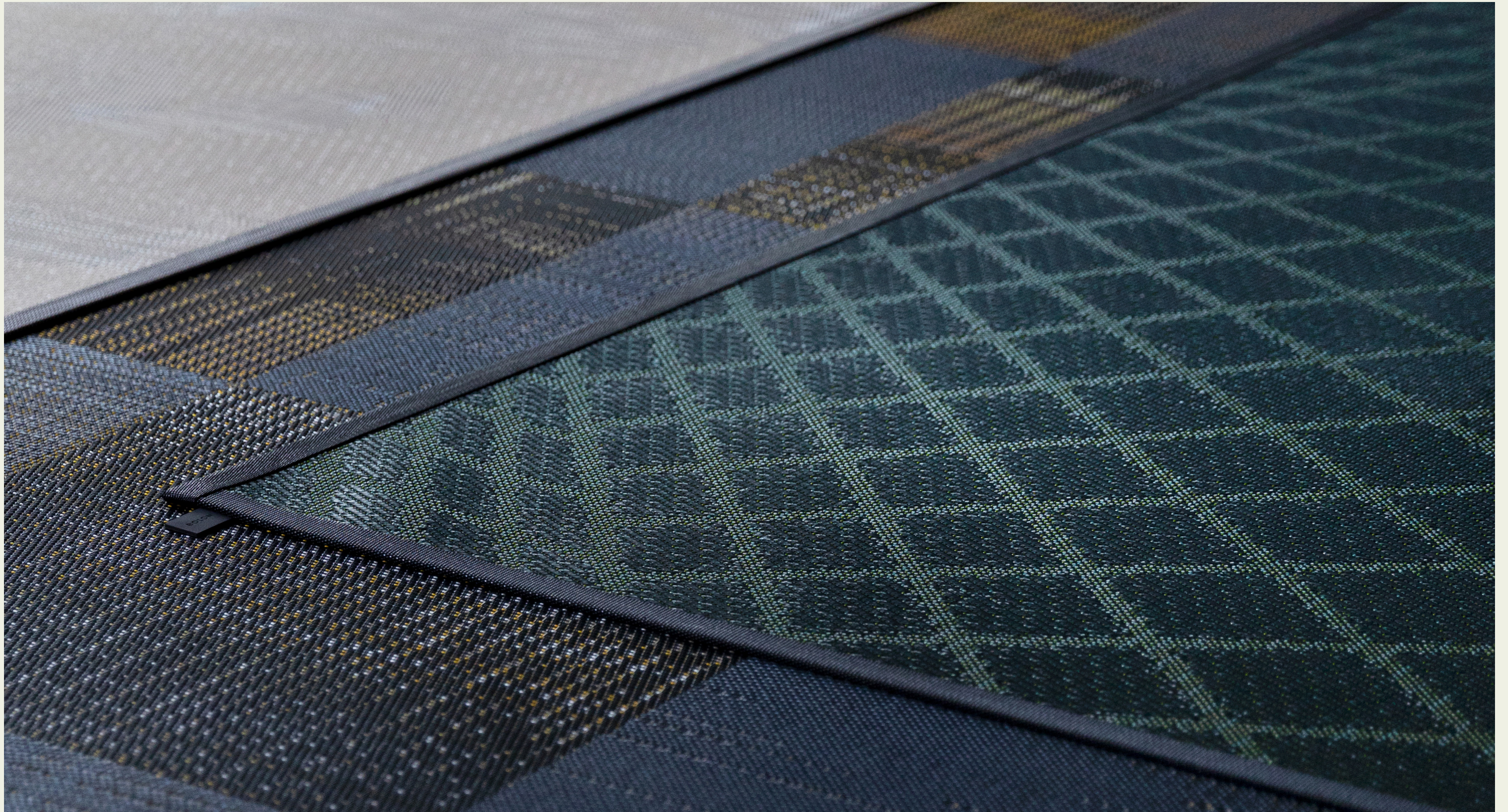
### WHICH PRODUCTS CONTAIN RECYCLED MATERIAL?

All of our collections contain recycled materials. The proportion of recycled material varies between 10-30% of the total material used.

### IS PLASTIC A GOOD MATERIAL FOR FLOORING?

Plastic can be a beneficial material for flooring in particular. This depends on the type of plastic used and how it is handled. The plastic we use is hardwearing with a 10- or 15- year guarantee. Our raw material, PVC, can be recycled up to seven times and it is completely free of additives such as phthalates or heavy metals. Our floors have low emission values and are, therefore, approved for hospital environments. The floors are also easy to clean, usually, plain water is all that's needed to clean them. Based on these facts, a plastic floor from Bolon is many times a good environmental option compared to other flooring.





For more information please reach out to Sales Support  
[info@bolon.com](mailto:info@bolon.com) | +46 321 530 400

**BOLON**